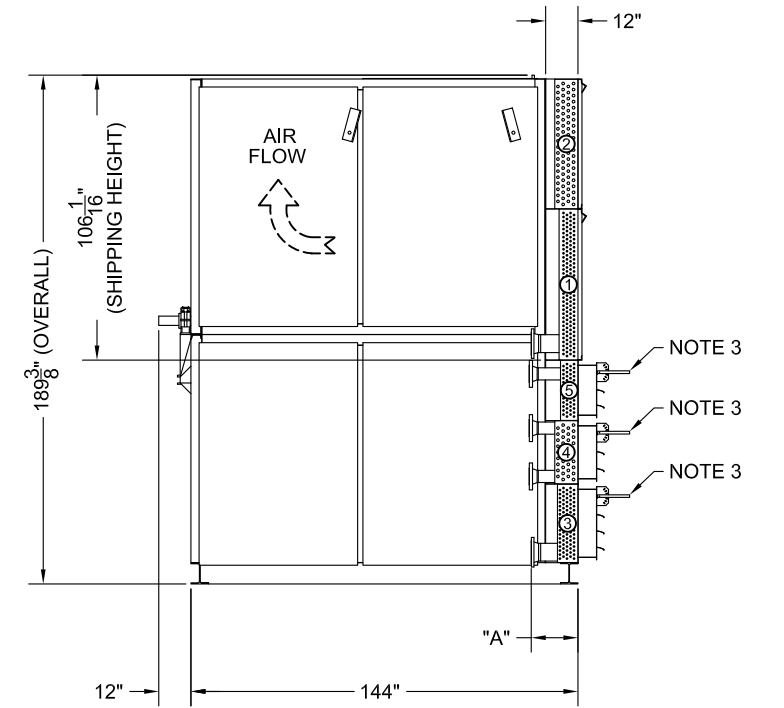
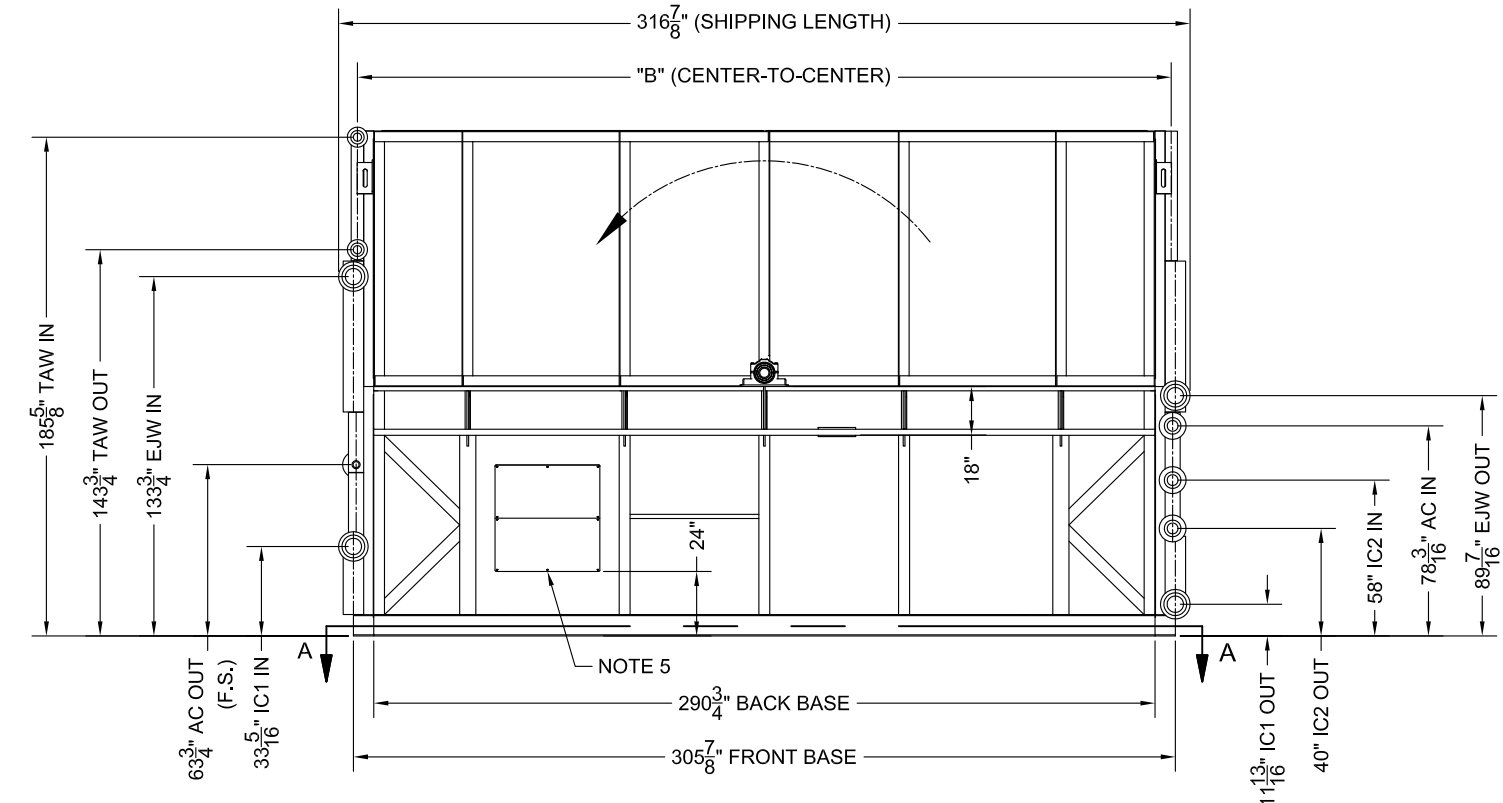
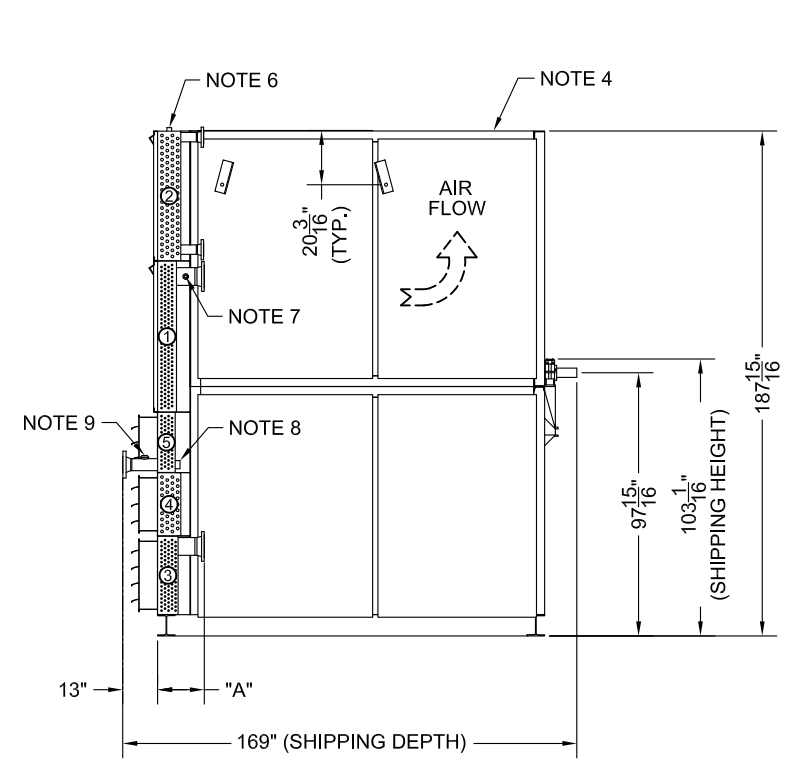
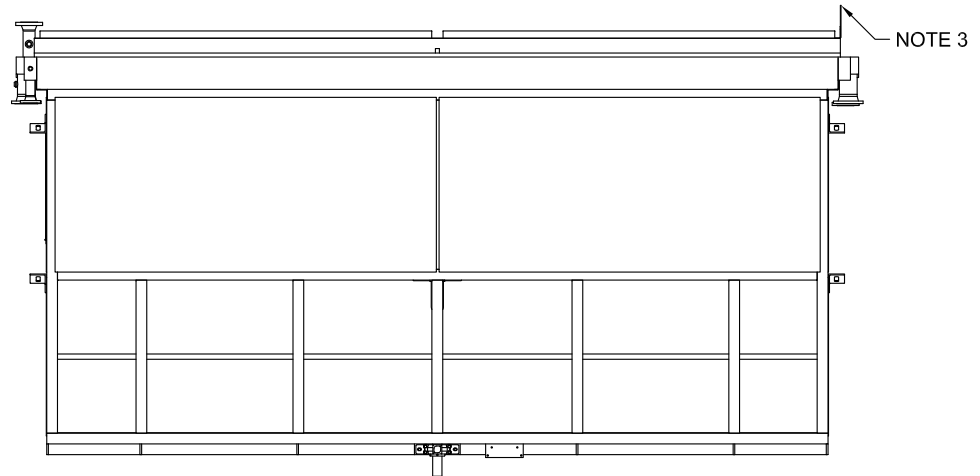
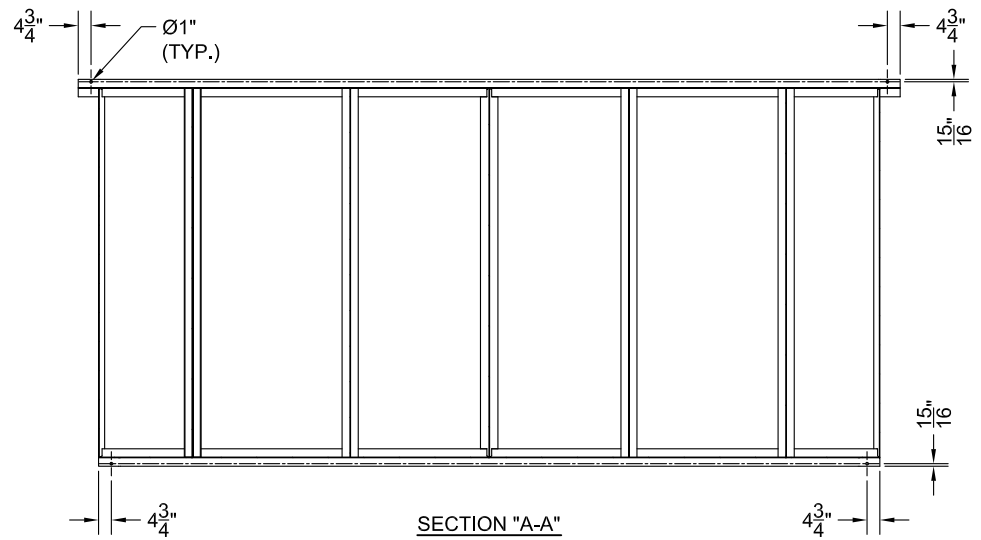


By _____ Date _____



- NOTES:
1. COOLER TO BE PAINTED WITH R&R STANDARD RED PRIMER.
2. COOLER TO BE SPLIT FOR SHIPPING.
3. MANUAL LOUVER OPERATOR LOCATION.
4. WELDED GUARD OVER DISCHARGE.
5. 39" x 45" ACCESS DOOR.
6. 1"-3000# HALF COUPLING.
7. 1"-3000# THREADOLET.
8. 2"-3000# HALF COUPLING.
9. 2"-3000# THREADOLET.

BEARING DATA		FAN DATA		REFERENCE DIMENSIONS				
FAN:	3 7/16" D.I. PB	TYPE:	MOORE CLASS 10000 VT	COIL	DIM "A"	DIM "B"	DIM "C"	DIM "D"
IDLER:	2 3/16" FAN & BLOWER (BY CUSTOMER)	SERIES:	48	1	17 3/8"	305 3/4"		
		HP:	78	2	17 1/8"	302 7/8"		
		RPM:	290	3	17 3/8"	305 7/8"		
		DIAMETER:	156"	4	18 1/8"	303 7/8"		
		BLADES:	10	5	18 1/8"	303 7/8"		
		PITCH:	14.6° @ CLEVIS	6				

REVISIONS			
REV	DESCRIPTION	DATE	BY
1	CORRECTED AUX. CONNECTIONS IN COIL DATA FOR COILS 1 & 2.	08/08/11	DNA

COIL DATA					
COIL 1	COIL 2	COIL 3	COIL 4	COIL 5	COIL 6
SERVICE: EJW	SERVICE: TAW	SERVICE: IC1	SERVICE: IC2	SERVICE: AC	SERVICE:
DESIGN/TEST PRES: 150/195 PSIG	DESIGN/TEST PRES: 150/195 PSIG	DESIGN/TEST PRES: 200/260 PSIG	DESIGN/TEST PRES: 250/325 PSIG	DESIGN/TEST PRES: 550/715 PSIG	DESIGN/TEST PRES:
MDMT/DESIGN TEMP: --/300°F	MDMT/DESIGN TEMP: --/300°F	MDMT/DESIGN TEMP: -20/330°F	MDMT/DESIGN TEMP: -20/330°F	MDMT/DESIGN TEMP: -20/330°F	MDMT/DESIGN TEMP:
ASME CODE STAMP: NO	ASME CODE STAMP: NO	ASME CODE STAMP: YES	ASME CODE STAMP: YES	ASME CODE STAMP: YES	ASME CODE STAMP:
NATIONAL BOARD: NO	NATIONAL BOARD: NO	NATIONAL BOARD: YES	NATIONAL BOARD: YES	NATIONAL BOARD: YES	NATIONAL BOARD:
CONNECTIONS	CONNECTIONS	CONNECTIONS	CONNECTIONS	CONNECTIONS	CONNECTIONS
INLET: (1) 6"-150# RF WN	INLET: (1) 3"-150# RF WN	INLET: (1) 6"-150# RF WN	INLET: (1) 4"-300# RF WN	INLET: (1) 4"-300# RF WN	INLET:
OUTLET: (1) 6"-150# RF WN	OUTLET: (1) 3"-150# RF WN	OUTLET: (1) 6"-150# RF WN	OUTLET: (1) 4"-300# RF WN	OUTLET: (1) 4"-300# RF WN	OUTLET:
AUX: (1) 1"-3000# TOL	AUX: (1) 1"-3000# HALF CPLG	AUX:	AUX:	AUX: (1) 2"-3000# HALF CPLG	AUX:
AUX:	AUX:	AUX:	AUX:	AUX: (1) 2"-3000# TOL	AUX:
LOUVER / GUARD	LOUVER / GUARD	LOUVER / GUARD	LOUVER / GUARD	LOUVER / GUARD	LOUVER / GUARD
CORE GUARD	CORE GUARD	MANUAL LOUVERS	MANUAL LOUVERS	MANUAL LOUVERS	

R&R ENGINEERING CO., INC.
P.O. Box 70005
Tulsa, Oklahoma 74170
(918) 252-2571
(918) 252-2574 Fax

CUSTOMER: **NATURAL GAS COMPRESSION SYSTEMS, INC.**

BY: DNA DATE: 06/24/2011

SPEC. SHEET: 08NG120.DOC

P.O. #: PO111327-C380

EST. SHIP WT: TOP - 18,000 LBS.
BOTTOM - 27,000 LBS.

DRAWING REVISION #: 1

ONE MODEL: UI-13-25

DRAWING NO.: R-548