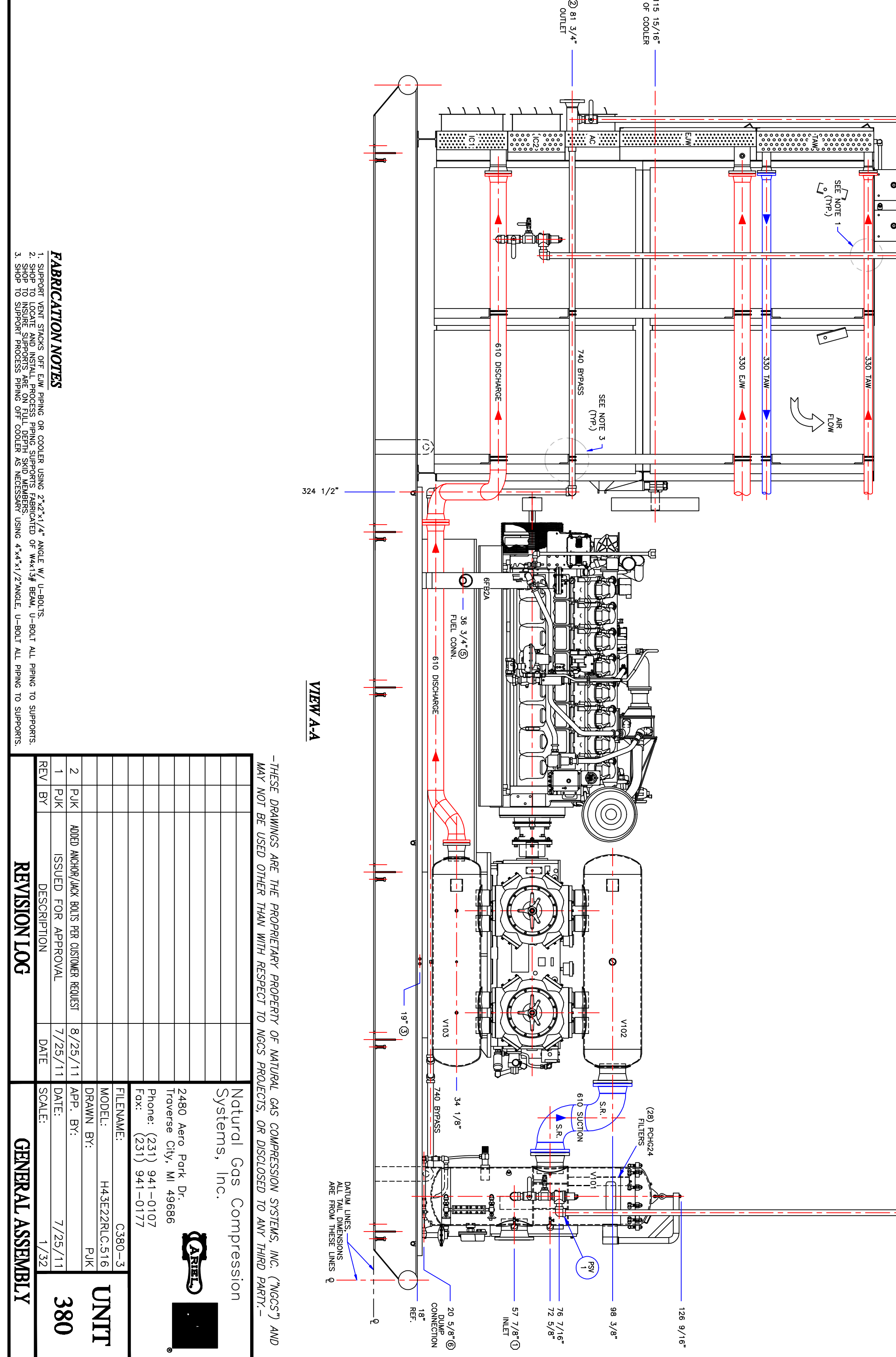
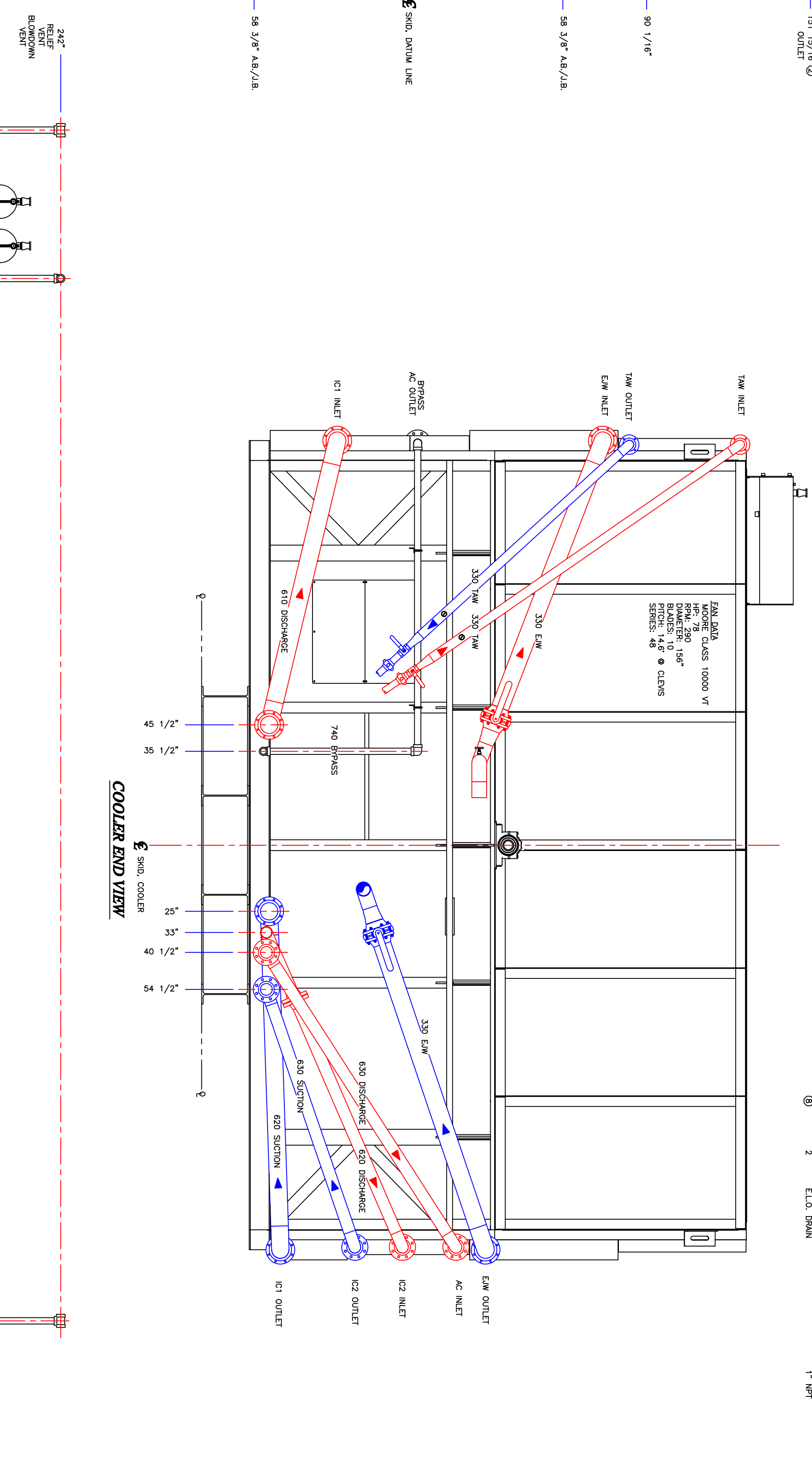
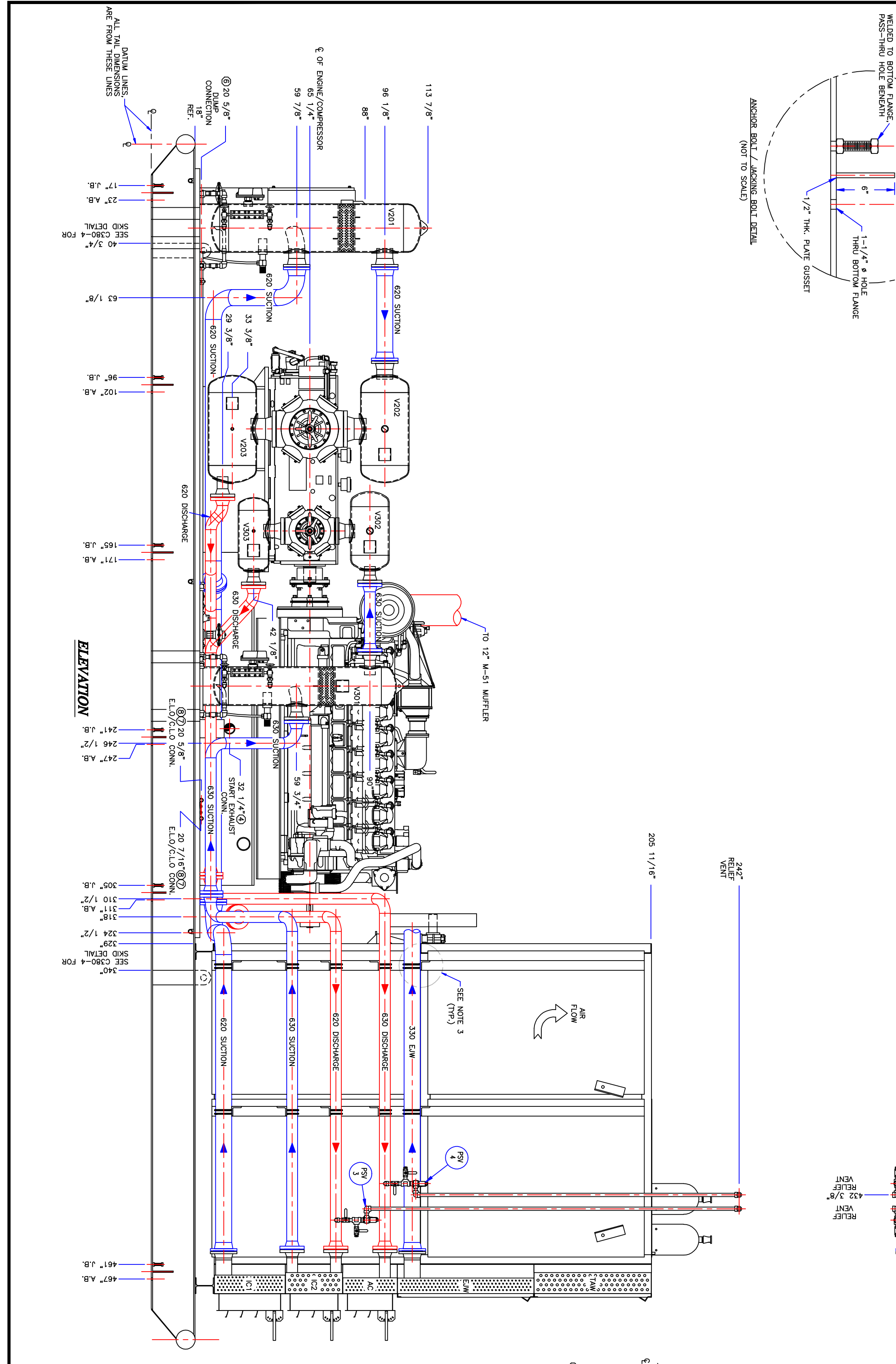


PLAN
 CAT 3516 INLE / INLET JOH-4



CONN. QTY.	DESCRIPTION	CONNECTION
1	INLET SCRIBBER CONNECTION	10" 150# RF
1	FINAL DISCHARGE CONNECTION	4" 300# RF
2	PACKING VENT & DISTANCE PIECE DRAIN	1/4" NPT
1	STARTER EXHAUST	4" NPT
1	L.P. FUEL INLET	2" NPT
2	SCRIBBER DUMP CONNECTION	1" NPT
2	C.L.O. DRAIN	1" NPT
2	E.L.O. DRAIN	1" NPT

FABRICATION NOTES

- SUPPORT VENT STACKS GET EAW PIPING OR COOLER USING 2"x2 1/2" INGLE W/ WELDS. BUT ALL PIPING TO SUPPORTS.
- FOR ALL DIMENSIONS SEE DRAWING.
- SPACE TO INSURE SUPPORTS ARE ON FULL BIRTH SIDE WELDS.
- SPACE TO SUPPORT PRESSURE TANKS OR COOLER AS NECESSARY USING 4"x4 1/2" INGLE W/ BUTT ALL PIPING TO SUPPORTS.

—THESE DRAWINGS ARE THE PROPRIETARY PROPERTY OF NATURAL GAS COMPRESSION SYSTEMS, INC. (NGCS) AND MAY NOT BE USED OTHER THAN WITH RESPECT TO NGCS PROJECTS OR DISCLOSED TO ANY THIRD PARTY.—

Natural Gas Compression Systems, Inc.

2480 Aero Park Dr.
 Traverse City, MI 49686
 Phone: (231) 941-0107
 Fax: (231) 941-0177

FILENAME: C380-3
 MODEL: H43E22R/C.G.16
 DRAWN BY: PJK
 DATE: 7/25/11

2480 Aero Park Dr.
 Traverse City, MI 49686
 Phone: (231) 941-0107
 Fax: (231) 941-0177

ISSUED FOR APPROVAL: 7/25/11
 DATE: 7/25/11

SCALE: 1/32

UNIT 380

GENERAL ASSEMBLY

REVISION LOG

REV	BY	DESCRIPTION	DATE
2	PJK	ADD ANCHOR/ JACK BOLTS PER CUSTOMER REQUEST	8/25/11
1	PJK	ISSUED FOR APPROVAL	7/25/11