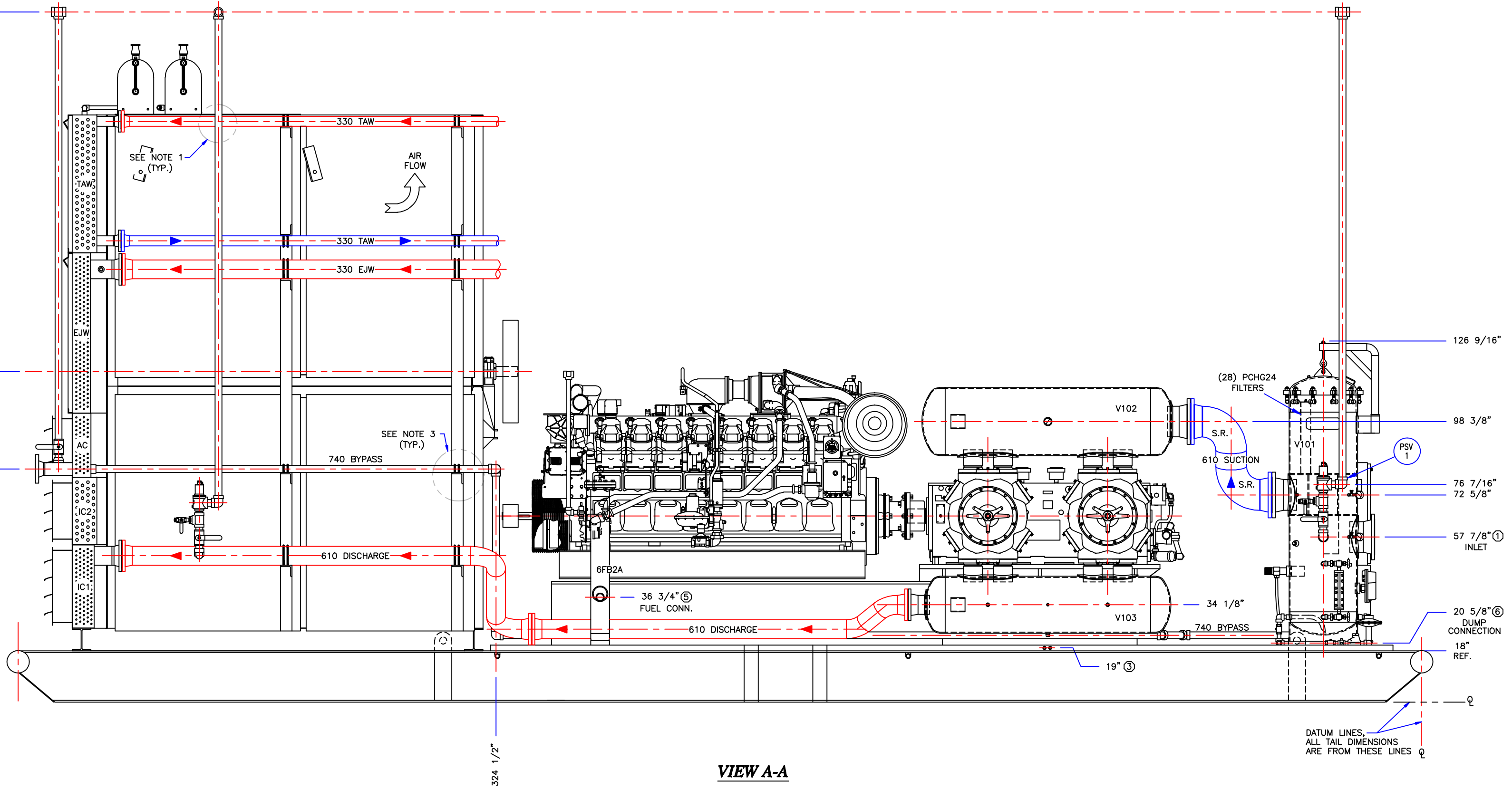
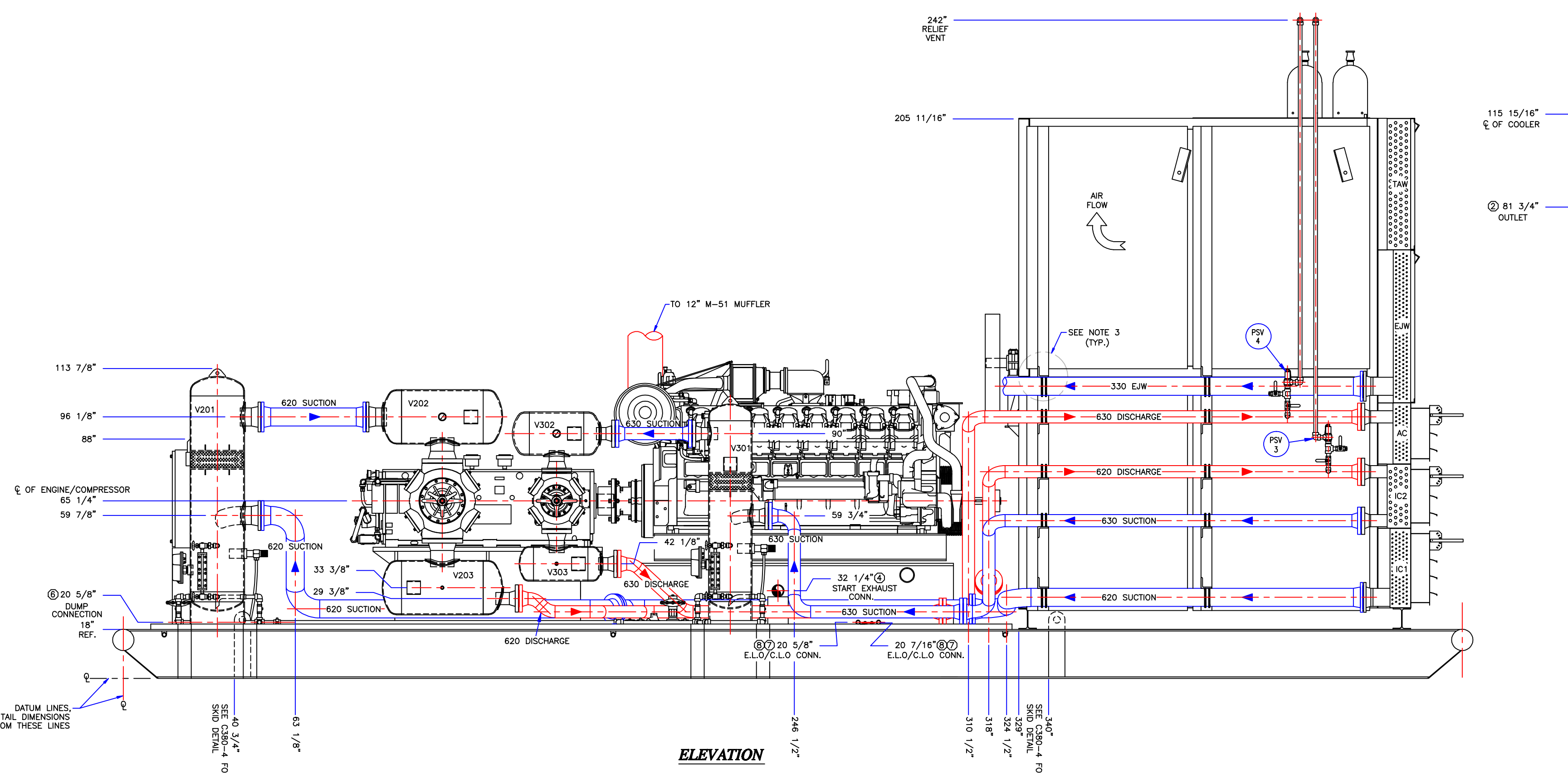
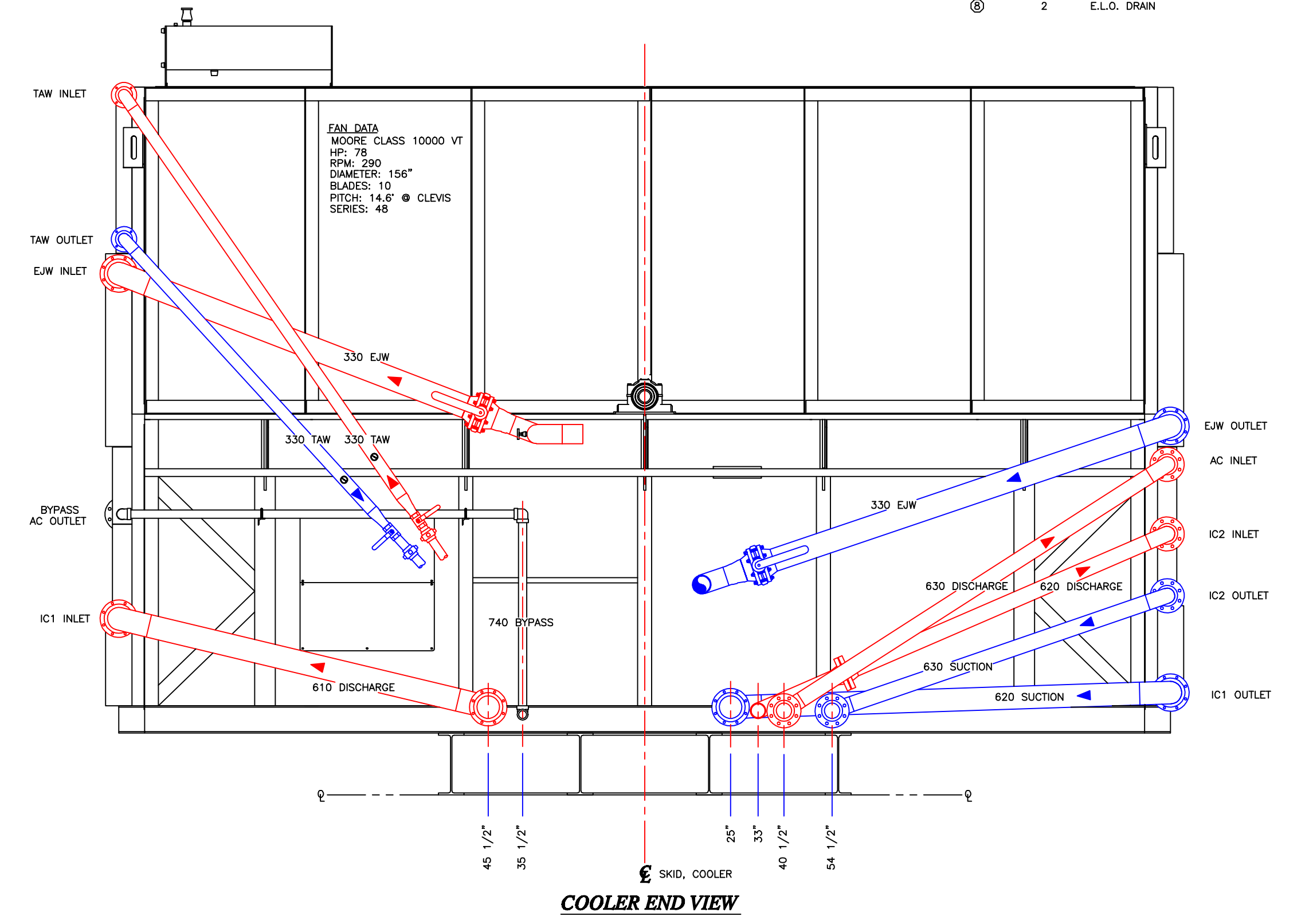
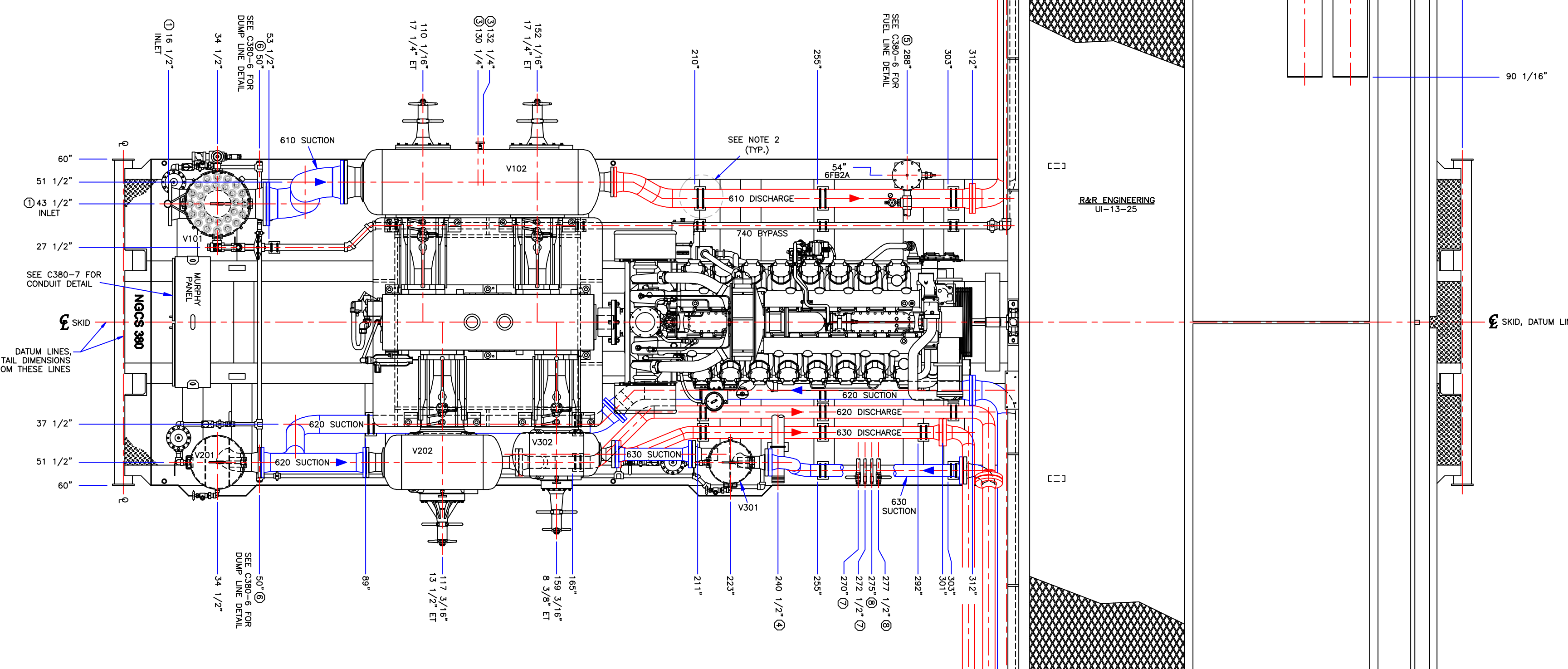


CONN.	QTY.	DESCRIPTION	CONNECTION
①	1	INLET SCRUBBER CONNECTION	10" 150# RF
②	1	FINAL DISCHARGE CONNECTION	4" 300# RF
③	2	PACKING VENT & DISTANCE PIECE DRAIN	1/4" NPT
④	1	STARTER EXHAUST	4" NPT
⑤	1	L.P. FUEL INLET	2" NPT
⑥	2	SCRUBBER DUMP CONNECTION	1" NPT
⑦	2	C.L.O. DRAIN	1" NPT
⑧	2	E.L.O. DRAIN	1" NPT



PRELIMINARY

- FABRICATION NOTES**
- SUPPORT VENT STACKS OFF EAW PIPING OR COOLER USING 2"x2"x1/4" ANGLE W/ U-BOLTS.
 - SHOP TO LOCATE AND INSTALL PROCESS PIPING SUPPORTS FABRICATED OF #4x1/2 GALV. U-BOLT ALL PIPING TO SUPPORTS. SHOP TO INSURE SUPPORTS ARE ON FULL DEPTH SKID MEMBERS.
 - SHOP TO SUPPORT PROCESS PIPING OFF COOLER AS NECESSARY USING 4"x4"x1/2" ANGLE. U-BOLT ALL PIPING TO SUPPORTS.

—THESE DRAWINGS ARE THE PROPRIETARY PROPERTY OF NATURAL GAS COMPRESSION SYSTEMS, INC. ("NGCS") AND MAY NOT BE USED OTHER THAN WITH RESPECT TO NGCS PROJECTS, OR DISCLOSED TO ANY THIRD PARTY.—

Natural Gas Compression Systems, Inc.			
2480 Aero Park Dr. Traverse City, MI 49686		FILENAME: C380-3 MODEL: H43E22RLC.516 DRAWN BY: PJK APP. BY:	
Phone: (231) 941-0107 Fax: (231) 941-0177		DATE: 7/25/11 SCALE: 1/32	
REVISION LOG		GENERAL ASSEMBLY	

UNIT 380