

INDIVIDUAL PARTS & KITS



Repair kits consist of flex discs and all the necessary installation hardware. SINGLE REPAIR KITS have one set of flex discs and all required hardware. Two single repair kits are required for a double flexing coupling. DOUBLE REPAIR KITS have two sets of flex discs and all required hardware. HARDWARE KITS have all the components of a repair kit except the flex discs. FLEX DISCS are also sold individually.

A SERIES (4 BOLT) COUPLING PARTS

KIT TYPE	REPAIR		HARDWARE		REPAIR	HDWR	REPAIR	HDWR	FLEX DISC
	SINGLE				DOUBLE		DOUBLE		
USED ON	AA, AK, AP, AR, A5, A7				AX		AY		ALL
MATL CLASS	A,B	C,E	A,B	C,E	A,B	A,B	A,B	A,B	ALL
05	A05RKA		A05HKA		AX05RKA	AX05HKA	AY05RKA	AY05HKA	A0054101
10	A10RKA		A10HKA		AX10RKA	AX10HKA	AY10RKA	AY10HKA	A0104101
15	A15RKA	A15RKE	A15HKA	A15HKE	AX15RKA	AX15HKA	AY15RKA	AY15HKA	A0154101
20	A20RKA	A20RKE	A20HKA	A20HKE	AX20RKA	AX20HKA	AY20RKA	AY20HKA	A0204101
25	A25RKA	A25RKE	A25HKA	A25HKE	AX25RKA	AX25HKA	AY25RKA	AY25HKA	A0254101
30	A30RKA	A30RKE	A30HKA	A30HKE	AX30RKA	AX30HKA			A0304101
35	A35RKA	A35RKE	A35HKA	A35HKE	AX35RKA	AX35HKA			A0354101
40	A40RKA	A40RKE	A40HKA	A40HKE	AX40RKA	AX40HKA			A0404101
45	A45RKA	A45RKE	A45HKA	A45HKE	AX45RKA	AX45HKA			A0454101

B SERIES (6 BOLT) COUPLING PARTS (EXCEPT BA)

KIT TYPE	REPAIR		HARDWARE		REPAIR	HDWR	REPAIR	HDWR	FLEX DISC
	SINGLE				SINGLE		DOUBLE		
USED ON	BH, BP, B5				BF		BY		ALL
MATL CLASS	A,B	C	A,B	C	A,B	A,B	A,B	A,B	ALL
15					BF15RKA	BF15HKA			A0154101
20					BF20RKA	BF20HKA			A0204101
33	B033RKA		B033HKA		BF33RKA	BF33HKA	BY33RKA	BY33HKA	B0334101
38	B038RKA	B038RKE	B038HKA	B038HKE	BF38RKA	BF38HKA	BY38RKA	BY38HKA	B0384101
43	B043RKA	B043RKE	B043HKA	B043HKE	BF43RKA	BF43HKA	BY43RKA	BY43HKA	B0434101
48	B048RKA	B048RKE	B048HKA	B048HKE	BF48RKA	BF48HKA	BY48RKA	BY48HKA	B0484101
53	B053RKA	B053RKE	B053HKA	BH53HKE	BF53RKA	BF53HKA	BY53RKA	BY53HKA	B0534101
58	B058RKA	B058RKE	B058HKA	B058HKE	BF58RKA	BF58HKA	BY58RKA	BY58HKA	B0584101
63	B063RKA	B063RKE	B063HKA	B063HKE	BF63RKA	BF63HKA	BY63RKA	BY63HKA	B0634101
68	B068RKA		B068HKA		BF68RKA	BF68HKA	BY68RKA	BY68HKA	B0684101
73	B073RKA		B073HKA		BF73RKA		BF73HKA		B0734101
78	B078RKA		B078HKA		BF78RKA		BF78HKA		B0784101

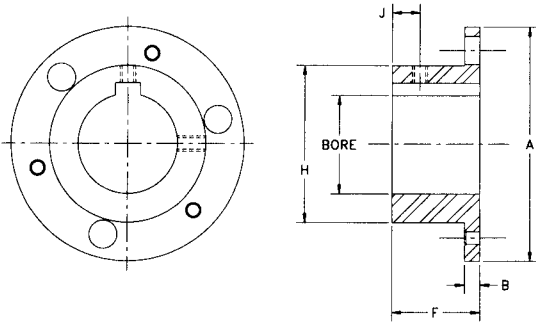
8 BOLT COUPLING PARTS (EXCEPT DA AND DP)

CPLG SIZE	HH, HSH, FSH, HFTH							
	DOUBLE REPAIR KIT		SINGLE HDWR KIT	FLEX DISC		BOLT	WASHER	NUT
	STD DISC	SS DISC		STD	SS			
22	D22-DF	D22-DF-SS	D22-BNW	D22-5	D22-5-SS	D22-6H	D22-7	D22-6N
26	D26-DF	D26-DF-SS	D26-BNW	D26-5	D26-5-SS	D26-6H	D26-7	D26-6N
31	D31-DF	D31-DF-SS	D31-BNW	D31-5	D31-5-SS	D31-6H	D31-7	D31-6N
35	D35-DF	D35-DF-SS	D35-BNW	D35-5	D35-5-SS	D35-6H	D35-7	D35-6N
37	D37-DF	D37-DF-SS	D37-BNW	D37-5	D37-5-SS	D37-6H	D37-7	D37-6N
42	D42-DF4*	D42-DF4-SS*	D42-BNW4*	D42-5	D42-5-SS	D42-6H4*	D42-7	D42-6N
45	D45-DF4*	D45-DF4-SS*	D45-BNW4*	D45-5	D45-5-SS	D45-6H4*	D45-7	D45-6N
50	D50-DF4*	D50-DF4-SS*	D50-BNW4*	D50-5	D50-5-SS	D50-6H4*	D50-7	D50-6N
55	D55-DF4*	D55-DF4-SS*	D55-BNW4*	D55-5	D55-5-SS	D55-6H4*	D55-7	D55-6N
60	D60-DF4*	D60-DF4-SS*	D60-BNW4*	D60-5	D60-5-SS	D60-6H4*	D60-7	D60-6N
70	D70-DF	D70-DF-SS	D70-BNW	D70-5	D70-5-SS	D70-6H	D70-7	D70-6N
75	D75-DF4*	D75-DF4-SS*	D75-BNW4*	D75-5	D75-5-SS	D75-6H4*	D75-74*	D75-6N4*
80	D80-DF4*	D80-DF4-SS*	D80-BNW4*	D80-5	D80-5-SS	D80-6H4*	D80-7	D80-6N
85	D85-DF	D85-DF-SS	D85-BNW	D85-5	D85-5-SS	D85-6H	D85-7	D85-6N
92	D92-DF	D92-DF-SS	D92-BNW	D92-5	D92-5-SS	D92-6H	D92-7	D92-6N

* ITEMS MARKED * HAVE NEW STYLE BOLTS. BOLT HEAD HEX MAY NOT FIT FSH TYPE FLYWHEEL ADAPTERS MANUFACTURED IN 1994 OR EARLIER. TO RECEIVE OLD STYLE BOLTS, DELETE THE "4" FROM THESE PART NUMBERS.

6 BOLT COUPLING HUBS

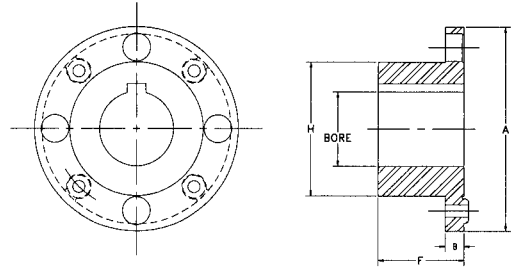
BH SERIES—USED ON BH, BP, B5, BY SERIES
 PROVIDED WITH STRAIGHT BORE AND KEYWAY
 INTERFERENCE FIT WITHOUT SET SCREWS IS RECOMMENDED



SIZE	MAX BORE	A	B	F	H	J	OPTIONAL SET SCREW SIZE
33	2.25	4.69	0.30	1.75	3.14	0.88	1/4-20 UNC
38	3.00	5.87	0.35	2.25	4.13	1.13	3/8-16 UNC
43	3.25	6.70	0.42	2.50	4.63	1.25	3/8-16 UNC
48	3.75	7.50	0.40	2.75	5.40	1.50	1/2-13 UNC
53	3.88	7.87	0.55	2.88	5.65	1.44	1/2-13 UNC
58	4.25	9.00	0.65	3.25	6.22	1.63	1/2-13 UNC
63	4.88	10.00	0.65	3.38	7.14	1.69	3/4-10 UNC
68	5.00	10.75	0.75	3.75	7.33	1.88	3/4-10 UNC
73	5.25	12.50	1.00	5.13	7.80	2.50	3/4-10 UNC
78	6.50	15.05	1.15	6.38	9.50	3.12	3/4-10 UNC

8 BOLT COUPLING HUBS

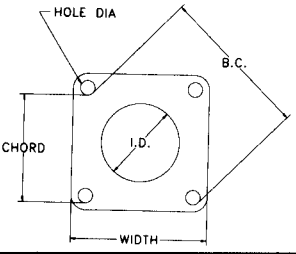
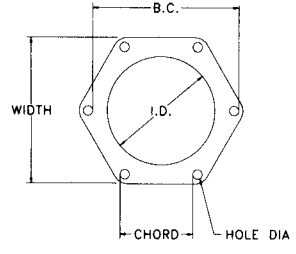
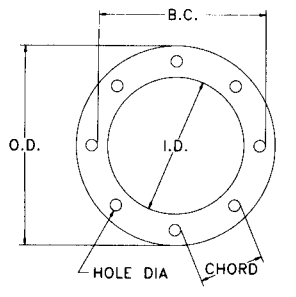
Dxx-3 CAST IRON MATERIAL, Dxx-3ST CAST STEEL MATERIAL
 USED ON HH, HSH, FSH, HFTH SERIES
 INTERFERENCE FIT WITHOUT SET SCREWS IS RECOMMENDED



SIZE	MAX BORE		A	B	F	H
	IRON	STEEL				
22	2.25	-	6.00	0.53	2.50	3.88
26	2.62	-	6.87	0.62	2.88	4.50
31	3.12	-	8.12	0.69	3.38	5.50
35	3.62	-	9.12	0.88	3.75	6.12
37	3.75	-	10.06	0.88	4.00	6.50
42	4.25	4.50	11.00	1.00	4.25	7.00
45	4.50	4.75	11.87	1.13	4.50	7.43
50	5.12	5.50	13.43	1.25	5.00	8.37
55	5.62	6.25	15.00	1.25	5.50	9.50
60	6.50	7.12	16.75	1.44	6.25	10.50
70	7.00	7.87	18.93	1.75	7.00	11.75
75	7.75	8.75	20.62	1.75	7.25	13.00
80	8.00	9.12	22.37	2.09	7.75	13.75
85	8.50	9.62	23.75	2.13	8.25	14.50
92	10.00	11.00	25.75	2.62	9.00	15.87

FORMFLEX FLEX DISC IDENTIFICATION CHART

ALL DIMENSIONS ARE ROUNDED TO THE NEAREST FRACTIONAL SIZE FOR IDENTIFICATION PURPOSES. NO TOLERANCES ARE SPECIFIED OR IMPLIED.
 DISC SET THICKNESS VARIES FOR TYPE BA AND DA.

4 BOLT DISCS		SIZE	WIDTH	I.D.	HOLE DIA	B.C. DIA	CHORD	DISC SET THICKNESS
		5	1-13/16	1	1/4	1-7/8	1-5/16	0.06
		10	2-3/16	1-3/16	1/4	2-3/8	1-5/8	0.09
		15	2-9/16	1-1/4	5/16	2-5/8	1-7/8	0.12
		20	2-13/16	1-5/8	5/16	3-1/8	2-3/16	0.14
		25	3-9/16	1-3/4	7/16	3-3/4	2-5/8	0.15
		30	4	2-1/16	1/2	4-1/4	3	0.18
		35	4-3/4	2-3/4	1/2	5-1/4	3-3/4	0.28
		40	5-1/2	3	5/8	6	4-1/4	0.30
		45	6-1/16	3-1/2	5/8	6-3/4	4-3/4	0.40
		50	7	4	3/4	7-3/4	5-1/2	0.43
		55	7-3/4	4-1/4	1	8-1/2	6	0.51
6 BOLT DISCS		SIZE	WIDTH	I.D.	HOLE DIA	B.C. DIA	CHORD	DISC SET THICKNESS
		33	3-3/4	2-3/4	1/4	3-3/4	1-7/8	0.10
		38	4-13/16	3-9/16	5/16	4-7/8	2-7/16	0.13
		43	5-11/16	3-15/16	7/16	5-9/16	2-7/8	0.16
		48	6-3/8	4-5/8	7/16	6-3/8	3-3/16	0.19
		53	6-3/4	4-3/4	1/2	6-5/8	3-5/16	0.24
		58	7-3/4	5-1/4	5/8	7-7/16	3-3/4	0.25
		63	8-1/2	6	5/8	8-3/8	4-3/16	0.30
		68	9-1/4	6-1/4	3/4	9-15/16	5	0.34
		73	10-5/8	6-5/8	1	10	5	0.44
		78	13-9/16	7-7/8	1-1/4	12	6	0.54
8 BOLT DISCS		SIZE	O.D.	I.D.	HOLE DIA	B.C. DIA	CHORD	DISC SET THICKNESS
		22	5-5/8	3-7/8	5/16	4-3/4	1-13/16	0.17
		26	6-9/16	4-7/16	13/32	5-1/2	2-1/8	0.23
		31	7-3/4	5-1/4	15/32	6-1/2	2-1/2	0.25
		35	8-5/8	5-3/4	17/32	7-1/4	2-3/4	0.29
		37	9-5/8	6-5/16	5/8	8	3-1/16	0.31
		42	10-1/2	6-3/4	11/16	8-5/8	3-5/16	0.31
		45	11-1/4	7-1/4	3/4	9-1/4	3-1/2	0.37
		50	12-13/16	8-1/2	7/8	10-1/2	4	0.46
		55	14-3/8	9	1	11-3/4	4-1/2	0.54
		60	15-15/16	9-15/16	1-1/8	13	5	0.59
		70	18-1/8	11-1/8	1-5/16	14-3/4	5-5/8	0.78
		75	19-3/4	12	1-7/16	16	6-1/8	0.80
		80	21-7/16	13-1/8	1-9/16	17-3/8	6-5/8	0.81
		85	22-7/8	14	1-3/4	18-1/2	7-1/8	0.87
		92	24-7/8	15	1-7/8	20	7-5/8	1.00