



Customer Profile / Sizing a Silencer

Need additional information? Please provide us with the following information and will we have a sales representative or the factory contact you direct.

Name _____ Title _____

Company _____

Address _____

City _____ State _____ ZIP _____

Phone _____ Fax _____ E-mail _____

Please complete and fax to 952-3440-3400 or contact your local Sales Representative

Information Required for Sizing an EM Products® Silencer Sizing Disks Available

For Dry Exhaust System:

1. Engine Model / KW / HP _____

2. Maximum Exhaust Flowrate (ACFM) _____

Maximum Exhaust Temperature (°F) _____

3. Engine Exhaust Outlet Size & Description _____

4. Maximum Allowable Pressure Drop In W.C. _____

5. Silenced Noise Criteria & Applicable Distance

from Silencer to Which Criteria Applies _____

6. Grade of Silencer Required Industrial Residential Critical Hospital

7. Silencer Type Required Reactive/Chamber Low Pressure Drop Spark Arrestor Type

8. Special Silencer Required Disk Style Low Profile Other _____

9. Mounted Vertical / Horizontal _____

10. Special Silencer Required: # of 90° Elbows _____ Size/Diameter _____

of 45° Elbows _____ Size/Diameter _____

Length of Straight Pipe Run _____ Size/Diameter _____



EM PRODUCTS®
PHILLIPS & TEMRO INDUSTRIES

EM PRODUCTS®
5380 Cottonwood Lane
Prior Lake, Minnesota 55372
(952) 440-9200
fax: (952) 440-3400
phillipsandtemro.com

EM... The Quiet Alternative



- Industrial & Marine Silencers
- Exhaust System Accessories

Manufactured by:
EM PRODUCTS®
Phillips & Temro Industries

June 2005
LITEC01-3200



Manufactured by:
EM PRODUCTS®
Cowl®
Phillips & Temro Industries

Visit our Web Site @ www.phillipsandtemro.com

In the United States

For: EM PRODUCTS®
Industrial / Marine Phillips & Temro Industries
Intake & Exhaust 5380 Cottonwood Lane
Components Prior Lake, MN 55372
(952) 440-9200 • FAX: (952) 440-3400

For: Phillips & Temro Industries
Cold Weather Starting, 9700 West 74th Street
Comfort & Emissions Eden Prairie, MN 55344
Control Products (952) 941-9700 • FAX: (952) 941-2285
(800) 328-6108

In Canada

For: Cowl®
"Spiral" Design Phillips & Temro Industries
Compact Silencers 100 Paquin Road
Winnipeg, Manitoba, Canada R2J 3V4
(204) 667-2260 • FAX: (204) 667-1954
(800) 665-0169 (in Canada)

"EM Products®" is a registered trademark of Phillips & Temro Industries. We reserve the right to change specifications appearing without incurring an obligation for equipment previously or subsequently sold. Dimensions in inches, weights in pounds. Dimensions and weights are nominal and may vary slightly with production models.



Meeting the Needs of Our Customers

- Industrial Grade Silencers
- Residential Grade Silencers
- Critical Grade Silencers
- Hospital Grade Silencers
- Spark Arresting Silencers
- Special Silencer Systems
- Accessories for complete exhaust systems
- Sizing program to ensure the correct size of silencer
- Acoustical engineers for application assistance
- Stainless steel available for special installation and operating requirements
- Complete line of silencers 1.5" - 6" size are stocked for immediate delivery
- Offering a quality product at a competitive price to meet all your exhaust needs



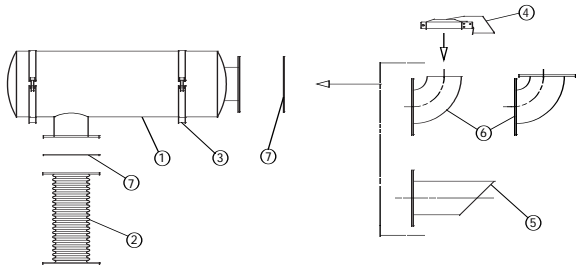
EM Products® Strengths & Benefits

- Flexible design and size to meet customer requirements
- In-house acoustical engineers for technical assistance
- Silencers with special connections
- Aluminized steel construction- heat and corrosion resistant (sizes to 26" body diameter)
- High temp (1200°F) satin black lead and chrome free enamel finish
- Stainless steel construction available
- Quality material and workmanship
- Inventory of immediate delivery on many items
- Shipping Awareness Program to ensure your product arrives on time and in good condition
- Years of proven performance
- Competitively priced
- Complete line of exhaust accessories
- One stop shop for all your exhaust system requirements

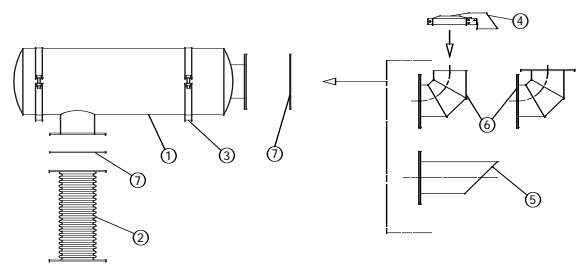




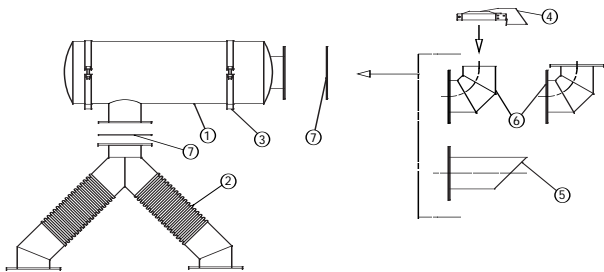
Single Silencer with Single Inlet



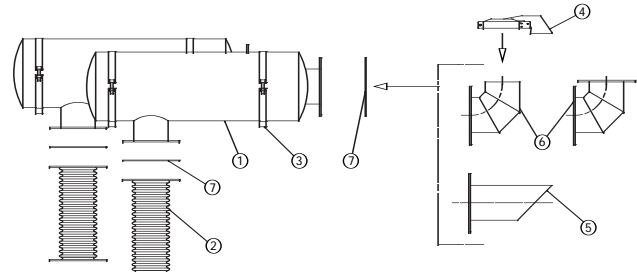
Single Silencer with Dual Inlet



Single Silencer with Wye Connection



Dual Silencers with Single Inlet



Engine Exhaust Silencer & Accessories:

- | | |
|--------------------|--------------------|
| 1. Silencer | 5. Mitered Exhaust |
| 2. Flex Connection | 6. Elbows |
| 3. Mounting Band | 7. Flange/Gasket |
| 4. Rain Cap | |

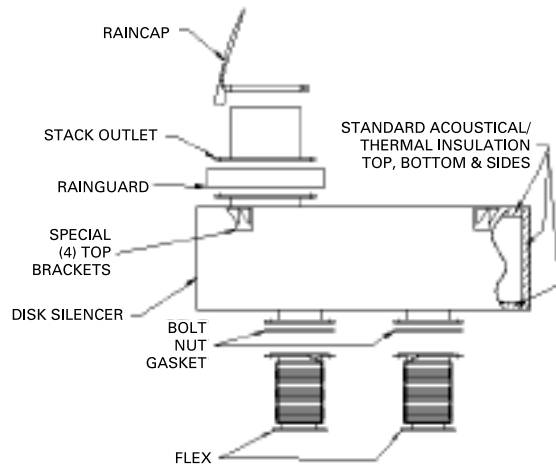
Exhaust System Components:

- **Engine to Silencer:** A 321 stainless steel, annular corrugated flexible exhaust hose shall be used in between the engine outlet connection and the silencer inlet connection.
- **Silencer Exhaust Pipe:** The exhaust tail pipe extending from the silencer outlet shall use the minimum amount of elbows (90° and 45°) and straight pipe to stay within the manufacturers maximum allowable back pressure.
- **Silencer and Piping Supports:** The silencer and piping system shall be mounted so that its weight is not supported by the engine. When at all possible, a vibration isolating type mounting support shall be used.
- **Exhaust Pipe Termination:** The exhaust pipe extending from the silencer shall use a rain cap or mitered exhaust with bird screen at the end of each exhaust run to prevent rain, snow, birds, debris, etc. from entering the engine exhaust system when the engine is not running.

The total exhaust system when at all possible, shall be the product of a single manufacture. This will insure the best form, fit and function during exhaust system installation and operations. The total exhaust system includes the silencer, silencer mounting supports, flex connector and accessories. Where applicable, the exhaust system components shall be supplied with a 1200° satin black finish. When a specified dBA level is required for a certain distance, please consult silencer manufacturer for correct silencer model and design.

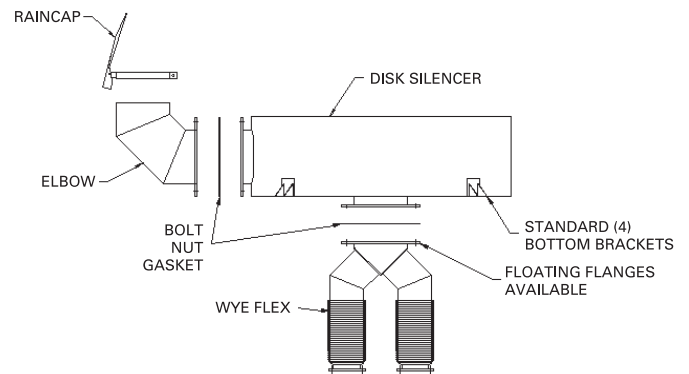


Disk Silencer* with Dual Bottom Inlet/Top Outlet



*Shown with Optional Accessories.

Disk Silencer* with Single Bottom Inlet/Side Outlet Wye Option



*Shown with Optional Accessories.

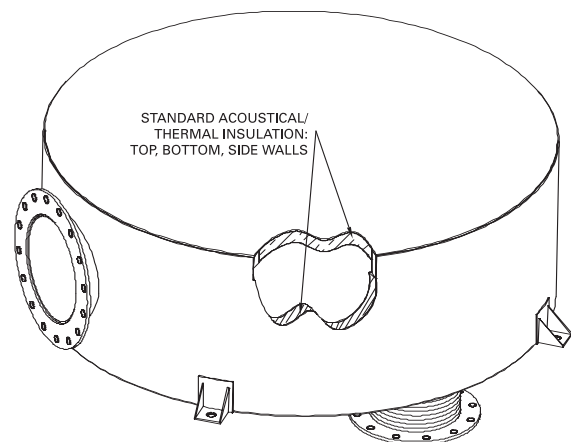
Applications

- Power Modules
- Marine Engine Rooms
- Drop-Over Enclosures
- Space Limited Applications

Consult your sales representative or the factory for various construction options:

- Specific inlet/outlet configurations and orientations
- Flush mounted flanges
- Flanges with weld nuts
- Integral roof plate design
- Comprehensive line of exhaust accessories
- Stainless steel construction (304, 316, 321)
- Internal Thermal Insulation
 - Top, Bottom and Side Walls
- Acoustically Engineered to Obtain Sound Pressure Objectives
- Effective Noise Reduction for Limited Space Applications

* See pages 16 - 17 for part numbers and other ordering information.

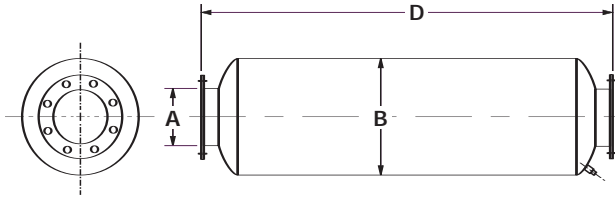




Engine Exhaust Silencers — Model “JI” Series

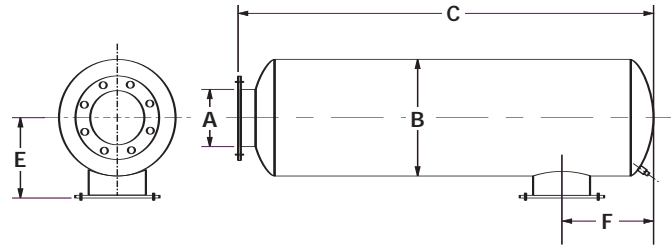
Industrial Grade

End Inlet/End Outlet



Part Number	A	B	D	WT
JIE-02-300060	2	6	24	12
JIE-25-300061	2.5	8	24	18
JIE-03-300062	3	8	25	20
JIE-35-300063	3.5	10	31	30
JIE-04-300064	4	10	32	31
JIE-05-300065	5	12	44	45
JIE-06-300066	6	12	44	50
JIE-08-300067	8	18	56	120
JIE-10-300068	10	22	72	180
JIE-12-300069	12	26	72	250
JIE-14-300070	14	30	84	375
JIE-16-300071	16	36	100	470
JIE-18-300072	18	42	104	1155
JIE-20-300073	20	48	103	1360

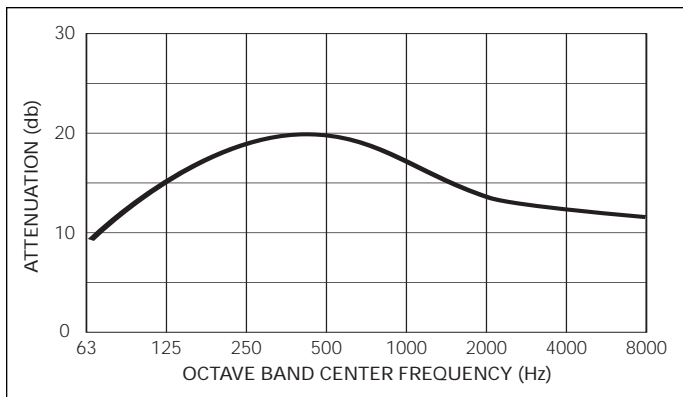
Side Inlet/End Outlet



Part Number	A	B	C	E	F	WT
JIS-02-400090	2	6	22	5.5	3.0	12
JIS-25-400091	2.5	8	22	6.5	3.7	18
JIS-03-400092	3	8	22	7	4.2	20
JIS-35-400093	3.5	10	29	8	5	30
JIS-04-400094	4	10	29.5	8.5	5.5	31
JIS-05-400095	5	12	41.6	10	7.6	50
JIS-06-400096	6	12	41.6	10	7.6	50
JIS-08-400097	8	18	54.5	13	10.5	120
JIS-10-400098	10	22	69	15	15	180
JIS-12-400099	12	26	69.5	17	17	250
JIS-14-400100	14	30	82	19	20	375
JIS-16-400101	16	36	97	22	23	470
JIS-18-400102	18	42	101	25	26.5	1155
JIS-20-400103	20	48	101.5	28	26	1360

Note: 3.5-inch and smaller standard with male NPT connections; 4.0-inch and larger standard with 150 # ANSI drilled plate flange connections. Dimensions in inches, weights in pounds. Dimensions and weights are nominal and may vary slightly with production models.

Representative Attenuation Curve for “JI” Series Silencers



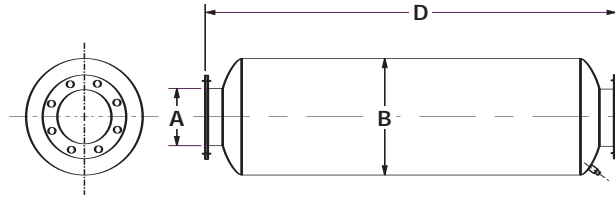
- Typical Reduction = 12 – 18 dB
- Aluminized/Carbon Steel Construction
- Stainless Steel Construction Available
- Contact Factory for Custom Fit Applications



Engine Exhaust Silencers — Model “JR” Series

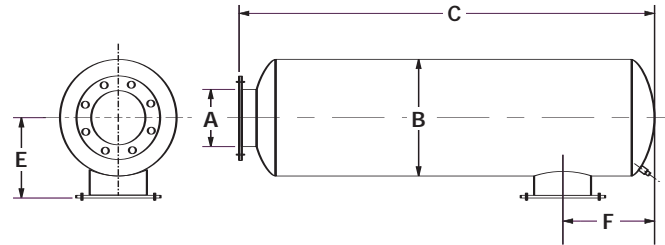
Residential Grade

End Inlet/End Outlet



Part Number	A	B	D	WT
JRE-15-500070	1.5	6	24	8
JRE-02-500071	2	6	30	17
JRE-25-500072	2.5	8	30	24
JRE-03-500073	3	8	31	26
JRE-35-500074	3.5	10	43	42
JRE-04-500075	4	10	44	44
JRE-05-500076	5	12	56	75
JRE-06-500077	6	12	56	75
JRE-08-500078	8	18	68	155
JRE-10-500079	10	22	84	220
JRE-12-500080	12	26	96	325
JRE-14-500081	14	30	120	505
JRE-16-500082	16	36	136	870
JRE-18-500083	18	42	138	1280
JRE-20-500084	20	48	143	1700

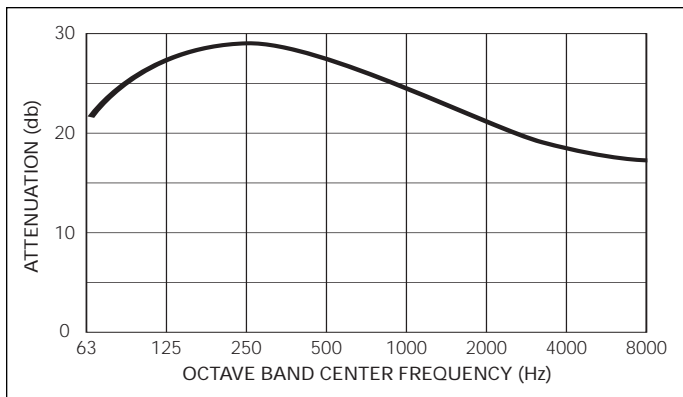
Side Inlet/End Outlet



Part Number	A	B	C	E	F	WT
JRS-15-600180	1.5	6	21.75	5	2.75	8
JRS-02-600181	2	6	28	5.5	3	17
JRS-25-600182	2.5	8	28.5	6.5	3.6	24
JRS-03-600183	3	8	29	7	4.1	26
JRS-35-600184	3.5	10	41	8	5	42
JRS-04-600185	4	10	41.5	8.5	5.5	44
JRS-05-600186	5	12	54	10	6.6	75
JRS-06-600187	6	12	54	10	7.6	75
JRS-08-600188	8	18	66.5	13	10.5	155
JRS-10-600189	10	22	81	15	15	220
JRS-12-600190	12	26	93.5	17	17.5	325
JRS-14-600191	14	30	118	19	20	505
JRS-16-600192	16	36	133	22	23	870
JRS-18-600193	18	42	135.5	25	31.5	1280
JRS-20-600211	20	48	139	28	35	1700

Note: 3.5-inch and smaller standard with male NPT connections; 4.0-inch and larger standard with 150 # ANSI drilled plate flange connections. Dimensions in inches, weights in pounds. Dimensions and weights are nominal and may vary slightly with production models.

Representative Attenuation Curve for “JR” Series Silencers



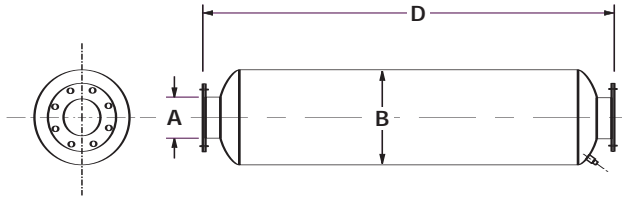
- Typical Reduction = 18 – 25 dB
- Aluminized/Carbon Steel Construction
- Stainless Steel Construction Available
- Contact Factory for Custom Fit Applications



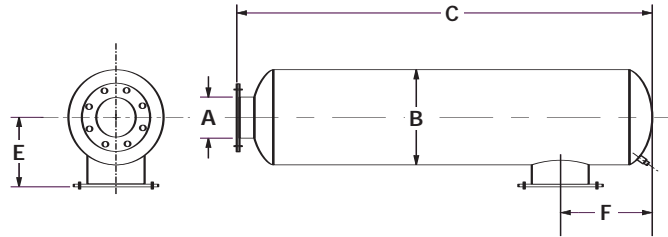
Engine Exhaust Silencers — Model “JC” Series

Critical Grade

End Inlet/End Outlet



Side Inlet/End Outlet

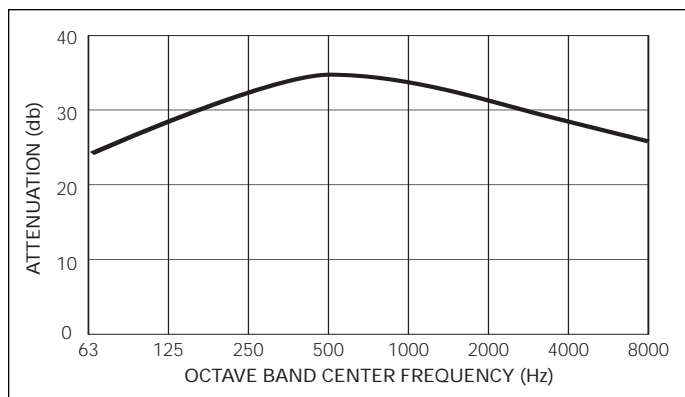


Part Number	A	B	D	WT
JCE-15-100070	1.5	6	30	10
JCE-02-100071	2	6	42	29
JCE-25-100072	2.5	8	42	38
JCE-03-100073	3	8	43	43
JCE-35-100074	3.5	10	55	72
JCE-04-100075	4	10	56	72
JCE-05-100076	5	12	68	81
JCE-06-100077	6	12	68	84
JCE-08-100078	8	18	92	249
JCE-10-100079	10	22	108	370
JCE-12-100080	12	26	120	506
JCE-14-100081	14	30	132	743
JCE-16-100082	16	36	160	1050
JCE-18-100083	18	42	174	1750
JCE-20-100084	20	48	203	2550

Part Number	A	B	C	E	F	WT
JCS-15-200380	1.5	6	27.75	5	5.25	10
JCS-02-200381	2	6	39.75	5.5	7.25	29
JCS-25-200382	2.5	8	39.88	6.5	7.38	38
JCS-03-200383	3	8	40.62	7	7.38	43
JCS-35-200384	3.5	10	53.0	8	9.25	72
JCS-04-200385	4	10	53.5	8.5	9.25	72
JCS-05-200386	5	12	65.62	10	12.25	81
JCS-06-200387	6	12	65.62	10	12.25	84
JCS-08-200388	8	18	90.50	13	16.5	249
JCS-10-200389	10	22	105.0	15	20.0	370
JCS-12-200390	12	26	117.5	17	21.5	506
JCS-14-200391	14	30	130.0	19	23.0	743
JCS-16-200392	16	36	157.0	22	29.0	1050
JCS-18-200393	18	42	171.5	25	33.0	1750

Note: 3.5-inch and smaller standard with male NPT connections; 4.0-inch and larger standard with 150 # ANSI drilled plate flange connections. Dimensions in inches, weights in pounds. Dimensions and weights are nominal and may vary slightly with production models.

Representative Attenuation Curve for “JC” Series Silencers



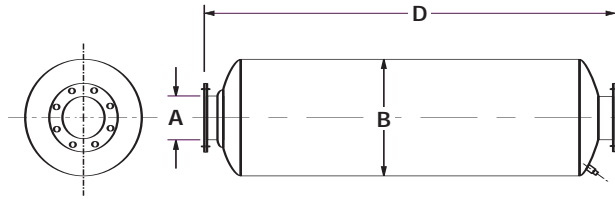
- Typical Reduction = 25 – 34 dB
- Aluminized/Carbon Steel Construction
- Stainless Steel Construction Available
- Contact Factory for Custom Fit Applications



Engine Exhaust Silencers — Model “JH” Series

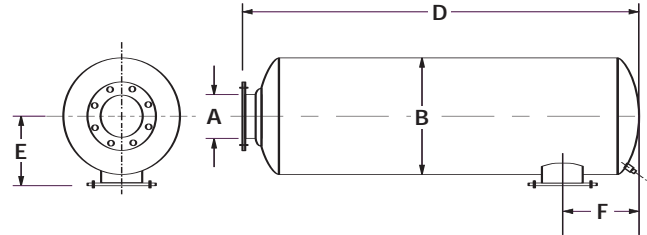
Hospital Grade

End Inlet/End Outlet



Part Number	A	B	D	WT
JHE-02-105030	2	10	44	55
JHE-25-105031	2.5	12	46	75
JHE-03-105032	3	12	46	75
JHE-35-105033	3.5	14	60	110
JHE-04-105034	4	14	60	115
JHE-05-105035	5	18	68	180
JHE-06-105036	6	18	68	185
JHE-08-105037	8	26	96	460
JHE-10-105038	10	30	110	680
JHE-12-105039	12	36	126	855
JHE-14-105040	14	42	138	1370
JHE-16-105041	16	42	162	1600
JHE-18-105042	18	48	205.5	2650
JHE-20-105051	20	60	220	4500

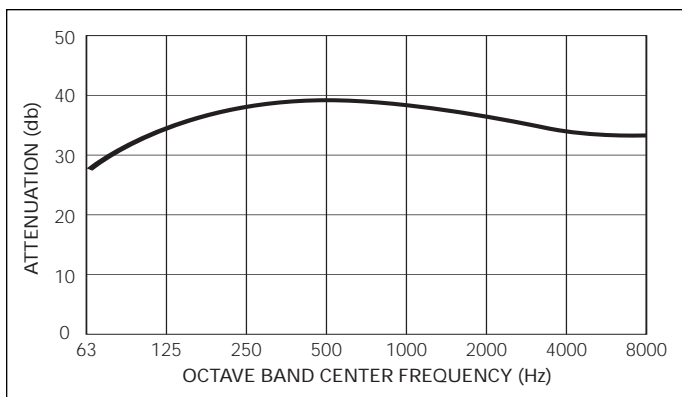
Side Inlet/End Outlet



Part Number	A	B	C	E	F	WT
JHS-02-205170	2	10	41.5	8.5	5.5	55
JHS-25-205171	2.5	12	42.5	10	7.75	75
JHS-03-205172	3	12	42.5	10	7.75	75
JHS-35-205173	3.5	14	56.5	11	9.5	110
JHS-04-205174	4	14	56.5	11	9.5	115
JHS-05-205175	5	18	66.5	13	10.5	180
JHS-06-205176	6	18	66.5	13	10.5	185
JHS-08-205177	8	26	93.5	17	17.5	460
JHS-10-205178	10	30	108	19	20	680
JHS-12-205179	12	36	122	22	23	855
JHS-14-205180	14	42	135	25	24	1370
JHS-16-205181	16	42	159	25	28	1600
JHS-18-205182	18	48	201.5	28	38	2650
JHS-20-205219	20	60	216	34	40	4500

Note: 3.5-inch and smaller standard with male NPT connections; 4.0-inch and larger standard with 150 # ANSI drilled plate flange connections. Dimensions in inches, weights in pounds. Dimensions and weights are nominal and may vary slightly with production models.

Representative Attenuation Curve for “JH” Series Silencers



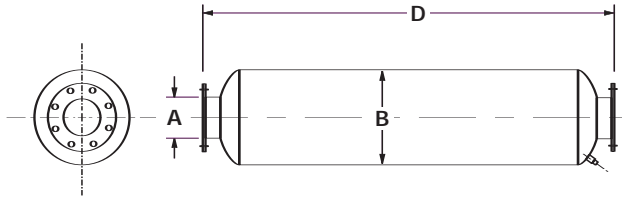
- Typical Reduction = 35 – 40 dB
- Aluminized/Carbon Steel Construction
- Stainless Steel Construction Available
- Contact Factory for Custom Fit Applications



Low Pressure Drop — “TAU” Series

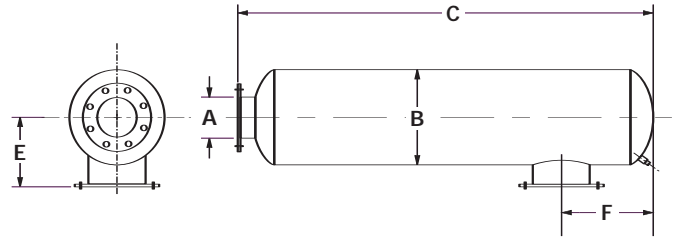
Residential Grade

End Inlet/End Outlet



Part Number	A	B	D	WT
TAUE-02-980995	2	6	23	10
TAUE-25-980996	2.5	6	27	10
TAUE-03-980997	3	8	30	19
TAUE-35-980998	3.5	8	31	22
TAUE-04-980999	4	8	36	22
TAUE-05-980400	5	10	51	71
TAUE-06-980401	6	10	60	75
TAUE-08-980265	8	14	66	140
TAUE-10-980403	10	16	70	180
TAUE-12-980404	12	18	70	225
TAUE-14-980405	14	20	88	340
TAUE-16-980406	16	24	108	480
TAUE-18-980407	18	26	108	540
TAUE-20-980408	20	28	132	840
TAUE-22-980409	22	36	136	1140
TAUE-24-980410	24	36	196	1600

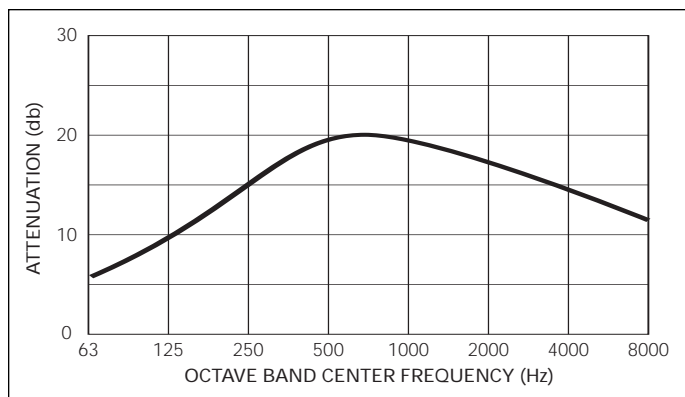
Side Inlet/End Outlet



Part Number	A	B	C	E	F	WT
TAUS-05-980415	5	10	48	9	4	71
TAUS-06-980416	6	10	57	9	7	75
TAUS-08-980009	8	14	63	11	8	140
TAUS-10-980007	10	16	67	12	10	180
TAUS-12-980188	12	18	67	13	11	225
TAUS-14-980420	14	20	85	14	12	340
TAUS-16-980016	16	24	105	16	14	480
TAUS-18-980422	18	26	105	17	15	540
TAUS-20-981473	20	28	129	18	17	840
TAUS-22-981474	22	36	133	22	19	1140
TAUS-24-981475	24	36	193	22	20	1600

Note: 3.5-inch and smaller standard with male NPT connections; 4.0-inch and larger standard with 150 # ANSI drilled plate flange connections. Dimensions in inches, weights in pounds. Dimensions and weights are nominal and may vary slightly with production models.

Representative Attenuation Curve for “TAU” Series Silencers



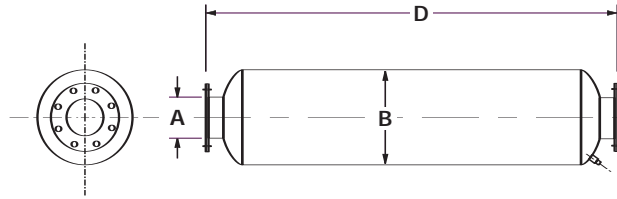
- Typical Reduction = 12 – 15 dB
- Aluminized/Carbon Steel Construction
- Stainless Steel Construction Available
- Contact Factory for Custom Fit Applications



Low Pressure Drop — “TBU” Series

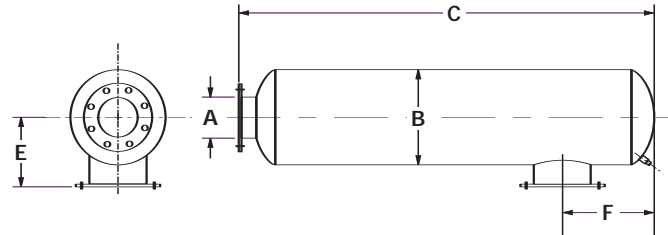
Critical Grade

End Inlet/End Outlet



Part Number	A	B	D	WT
TBUE-04-980849	4	10	54	72
TBUE-05-980850	5	10	54	72
TBUE-06-980851	6	12	66	90
TBUE-08-980638	8	14	78	145
TBUE-10-980260	10	16	82	205
TBUE-12-980435	12	22	89	340
TBUE-14-980436	14	26	110	475
TBUE-16-980437	16	26	132	680
TBUE-18-980438	18	36	184	1500
TBUE-20-980439	20	42	198	1800
TBUE-22-980440	22	48	200	2300
TBUE-24-980441	24	54	262	4000

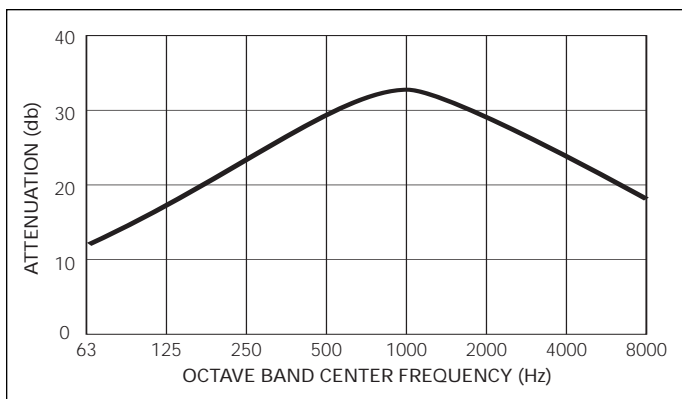
Side Inlet/End Outlet



Part Number	A	B	C	E	F	WT
TBUS-04-980445	4	10	51	9	4	72
TBUS-05-980446	5	10	51	9	4	72
TBUS-06-980447	6	12	63	10	5	90
TBUS-08-980448	8	14	75	11	6	145
TBUS-10-980449	10	16	79	12	10	205
TBUS-12-980450	12	22	86	15	11	340
TBUS-14-980451	14	26	107	17	12	475
TBUS-16-980452	16	26	129	17	14	680
TBUS-18-980453	18	36	181	22	18	1500
TBUS-20-980454	20	42	195	25	19	1800
TBUS-22-980455	22	48	197	28	21	2300
TBUS-24-980456	24	54	259	31	22	4000

Note: Standard with 150 # ANSI drilled plate flange connections. Dimensions in inches, weights in pounds. Dimensions and weights are nominal and may vary slightly with production models.

Representative Attenuation Curve for “TBU” Series Silencers



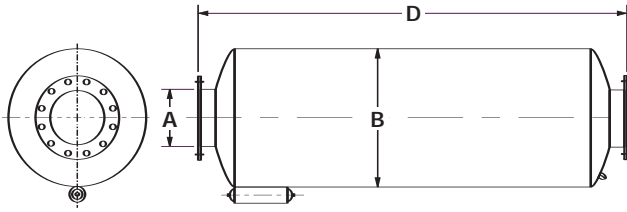
- Typical Reduction = 17 – 22 dB
- Aluminized/Carbon Steel Construction
- Stainless Steel Construction Available
- Contact Factory for Custom Fit Applications



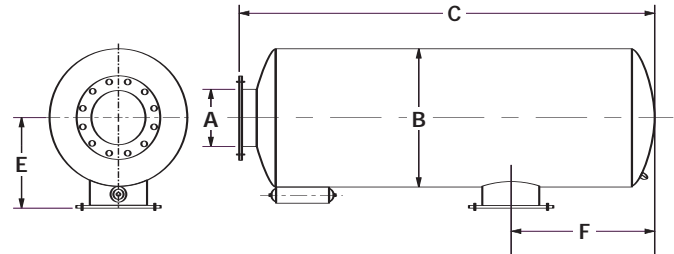
Spark Arrestors — “SSU” Series

Industrial Grade

End Inlet/End Outlet



Side Inlet/End Outlet

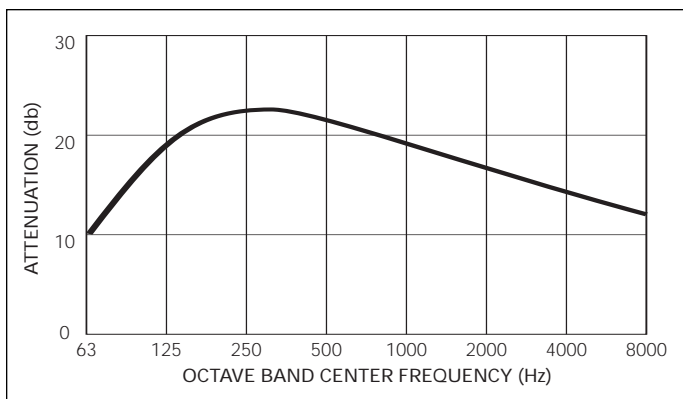


Part Number	A	B	D	WT
SSUE-15-981046	1.5	8	20	18
SSUE-02981047	2	8	21	20
SSUE-25-981048	2.5	10	22	27
SSUE-03-981049	3	12	26	37
SSUE-35-981050	3.5	14	30	60
SSUE-04-980338	4	14	32	82
SSUE-05-980218	5	14	42	102
SSUE-06-980340	6	18	49	162
SSUE-08-980341	8	22	50	245
SSUE-10-980342	10	26	63	330
SSUE-12-980343	12	30	76	555
SSUE-14-980344	14	36	78	825
SSUE-16-980345	16	42	81	860
SSUE-18-980346	18	48	100	1390
SSUE-20-980347	20	48	118	1540
SSUE-22-980348	22	54	120	1900
SSUE-24-980349	24	60	132	2270

Part Number	A	B	C	E	F	WT
SSUS-25-981407	2.5	Not Available				
SSUS-03-981408	3					
SSUS-35-981409	3.5					
SSUS-04-981189	4					
SSUS-05-981190	5	14	39.75	11	7.00	102
SSUS-06-981191	6	18	45.50	13	8.25	162
SSUS-08-981192	8	22	46.50	17	9.75	245
SSUS-10-981193	10	26	59.50	19	11.50	330
SSUS-12-981194	12	30	73.00	20	13.25	555
SSUS-14-981195	14	36	75.50	24	15.00	825
SSUS-16-981196	16	42	79.00	27	16.50	860
SSUS-18-981197	18	48	97.00	33	19.00	1390
SSUS-20-981198	20	48	115.00	33	20.00	1540
SSUS-22-981199	22	54	116.50	36	22.00	1900
SSUS-24-981200	24	60	129.50	39	23.50	2270

Note: 3.5-inch and smaller standard with male NPT connections; 4.0-inch and larger standard with 150 # ANSI drilled plate flange connections. Dimensions in inches, weights in pounds. Dimensions and weights are nominal and may vary slightly with production models.

Representative Attenuation Curve for “SSU” Series Silencers



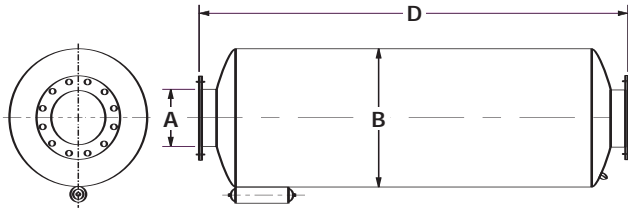
- Typical Reduction = 12 – 18 dB
- Aluminized/Carbon Steel Construction
- Stainless Steel Construction Available
- Contact Factory for Custom Fit Applications



Spark Arrestors — "SRU" Series

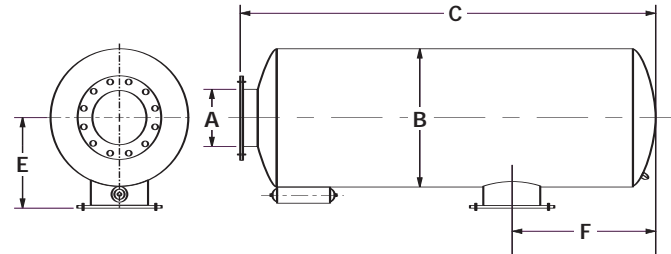
Residential Grade

End Inlet/End Outlet



Part Number	A	B	D	WT
SRUE-25-980350	2.5	10	36	60
SRUE-03-980351	3	10	36	65
SRUE-35-980352	3.5	14	42	95
SRUE-04-980353	4	14	42	102
SRUE-05-980354	5	14	66	152
SRUE-06-980355	6	18	61	202
SRUE-08-980356	8	22	73	325
SRUE-10-980357	10	26	93	505
SRUE-12-980358	12	30	112	755
SRUE-14-980359	14	36	108	1005
SRUE-16-980360	16	42	111	1115
SRUE-18-980361	18	48	118	1565
SRUE-20-980362	20	48	142	1805
SRUE-22-980363	22	54	144	2195
SRUE-24-980364	24	60	144	2425

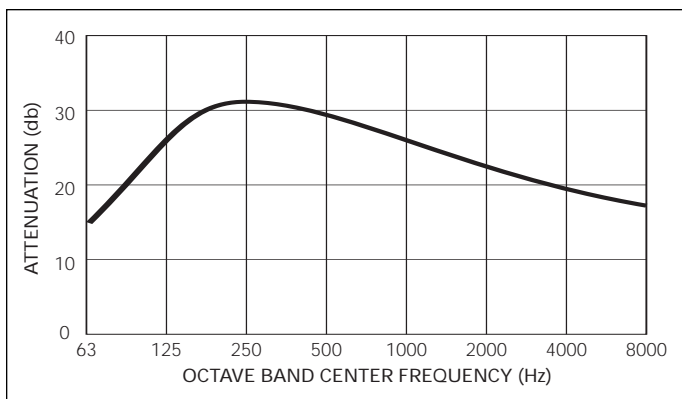
Side Inlet/End Outlet



Part Number	A	B	C	E	F	WT
SRUS-25-	2.5	Not Available				
SRUS-03-	3					
SRUS-35-	3.5					
SRUS-04-981304	4	14	39.50	11	5.50	102
SRUS-05-981305	5	14	63.50	11	7.00	152
SRUS-06-981306	6	18	57.50	13	8.25	202
SRUS-08-981307	8	22	69.50	17	9.75	325
SRUS-10-981308	10	26	89.50	19	11.50	505
SRUS-12-981309	12	30	109.00	20	13.25	755
SRUS-14-981310	14	36	105.50	24	15.00	1005
SRUS-16-981311	16	42	109.00	27	16.50	1115
SRUS-18-981406	18	48	115.00	33	19.00	1565
SRUS-20-981312	20	48	139.00	33	20.00	1805
SRUS-22-981313	22	54	140.50	36	22.00	2195
SRUS-24-981314	24	60	142.50	39	23.50	2425

Note: 3.5-inch and smaller standard with male NPT connections; 4.0-inch and larger standard with 150 # ANSI drilled plate flange connections. Dimensions in inches, weights in pounds. Dimensions and weights are nominal and may vary slightly with production models.

Representative Attenuation Curve for "SRU" Series Silencers



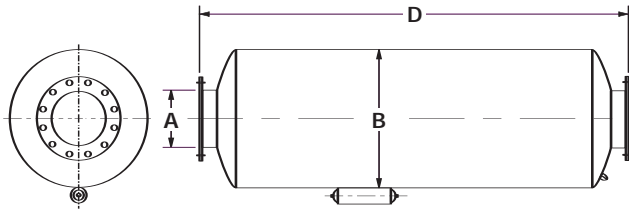
- Typical Reduction = 18 – 25 dB
- Aluminized/Carbon Steel Construction
- Stainless Steel Construction Available
- Contact Factory for Custom Fit Applications



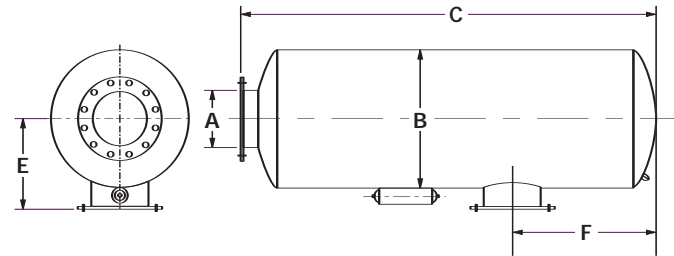
Spark Arrestors — “SCU” Series

Critical Grade

End Inlet/End Outlet



Side Inlet/End Outlet

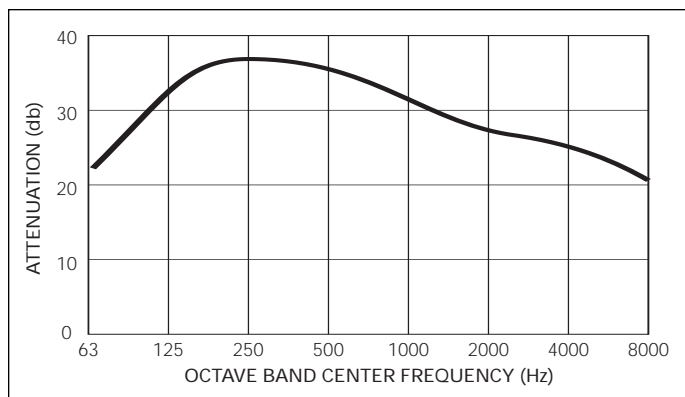


Part Number	A	B	D	WT
SCUE-25-981413	2.5	Consult Factory		
SCUE-03-981414	3			
SCUE-35-981415	3.5			
SCUE-04-981416	4	14	58.50	120
SCUE-05-981417	5	14	70.50	150
SCUE-06-981418	6	18	72.00	210
SCUE-08-981419	8	22	85.00	295
SCUE-10-981420	10	26	110.00	465
SCUE-12-981421	12	30	123.00	700
SCUE-14-981422	14	36	137.00	900
SCUE-16-981423	16	42	139.00	1425
SCUE-18-981424	18	48	141.00	1725
SCUE-20-981425	20	48	153.00	1820
SCUE-22-981426	22	54	155.00	1920
SCUE-24-981427	24	60	168.00	2500

Part Number	A	B	C	E	F	WT
SCUS-25-981428	2.5	Consult Factory				
SCUS-03-981429	3					
SCUS-35-981430	3.5					
SCUS-04-981431	4	14	55.50	11.00	6.50	120
SCUS-05-981432	5	14	68.00	11.00	7.00	150
SCUS-06-981433	6	18	68.50	13.00	8.25	210
SCUS-08-981434	8	22	81.50	17.00	9.75	295
SCUS-10-981435	10	26	106.50	19.00	11.50	465
SCUS-12-981436	12	30	120.00	20.00	13.25	700
SCUS-14-981437	14	36	134.50	24.00	15.00	900
SCUS-16-981438	16	42	137.00	27.00	16.50	1425
SCUS-18-981439	18	48	138.00	33.00	19.00	1725
SCUS-20-981440	20	48	150.00	33.00	20.00	1820
SCUS-22-981441	22	54	151.50	36.00	22.00	1920
SCUS-24-981442	24	60	166.50	39.00	23.50	2500

Note: 3.5-inch and smaller standard with male NPT connections; 4.0-inch and larger standard with 150 # ANSI drilled plate flange connections. Dimensions in inches, weights in pounds. Dimensions and weights are nominal and may vary slightly with production models.

Representative Attenuation Curve for “SCU” Series Silencers



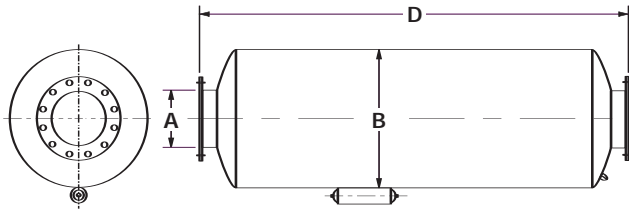
- Typical Reduction = 25 – 32 dB
- Aluminized/Carbon Steel Construction
- Stainless Steel Construction Available
- Contact Factory for Custom Fit Applications



Spark Arrestors — “SHU” Series

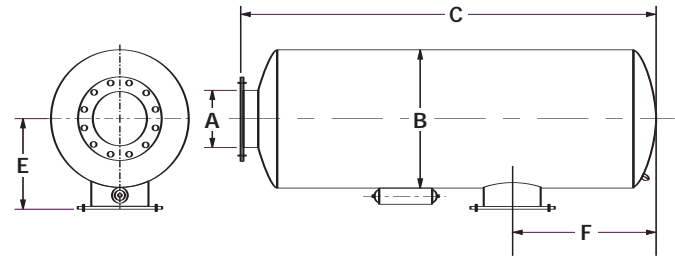
Hospital Grade

End Inlet/End Outlet



Part Number	A	B	D	WT
SHUE-25-981443	2.5	Consult Factory		
SHUE-03-981444	3			
SHUE-35-981445	3.5			
SHUE-04-981446	4	16	59.00	150
SHUE-05-981447	5	18	72.00	195
SHUE-06-981448	6	18	80.00	212
SHUE-08-981449	8	26	96.00	470
SHUE-10-981450	10	30	110.00	700
SHUE-12-981451	12	36	126.00	870
SHUE-14-981452	14	42	138.00	1380
SHUE-16-981453	16	42	163.00	1620
SHUE-18-981454	18	48	205.50	2920
SHUE-20-981455	20	60	220.00	4950
SHUE-22-981456	22	60	220.00	4970
SHUE-24-981457	24	66	244.00	6670

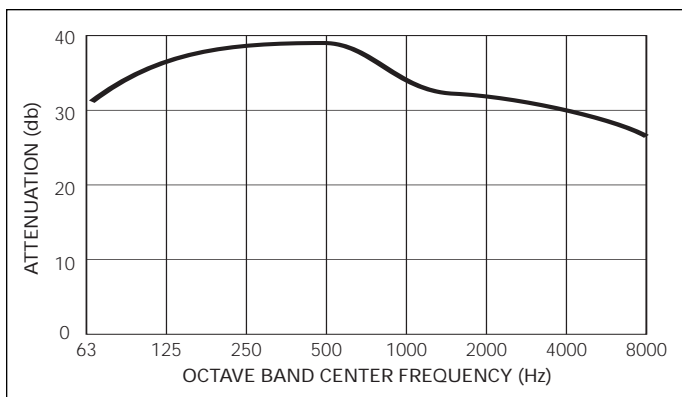
Side Inlet/End Outlet



Part Number	A	B	C	E	F	WT
SHUS-25-981458	2.5	Consult Factory				
SHUS-03-981459	3					
SHUS-35-981460	3.5					
SHUS-04-981461	4	16	56.00	12.00	6.75	150
SHUS-05-981462	5	18	69.00	13.00	7.75	195
SHUS-06-981463	6	18	78.00	13.00	8.25	212
SHUS-08-981464	8	26	93.50	19.00	10.50	470
SHUS-10-981465	10	30	108.00	20.00	12.25	700
SHUS-12-981466	12	36	122.00	24.00	14.50	870
SHUS-14-981467	14	42	135.00	27.00	15.50	1380
SHUS-16-981468	16	42	159.00	27.00	16.50	1620
SHUS-18-981469	18	48	201.50	33.00	19.00	2920
SHUS-20-981470	20	60	216.00	39.00	21.50	4950
SHUS-22-981471	22	60	216.00	39.00	22.50	4970
SHUS-24-981472	24	66	241.00	42.00	24.00	6670

Note: 3.5-inch and smaller standard with male NPT connections; 4.0-inch and larger standard with 150 # ANSI drilled plate flange connections. Dimensions in inches, weights in pounds. Dimensions and weights are nominal and may vary slightly with production models.

Representative Attenuation Curve for “SHU” Series Silencers

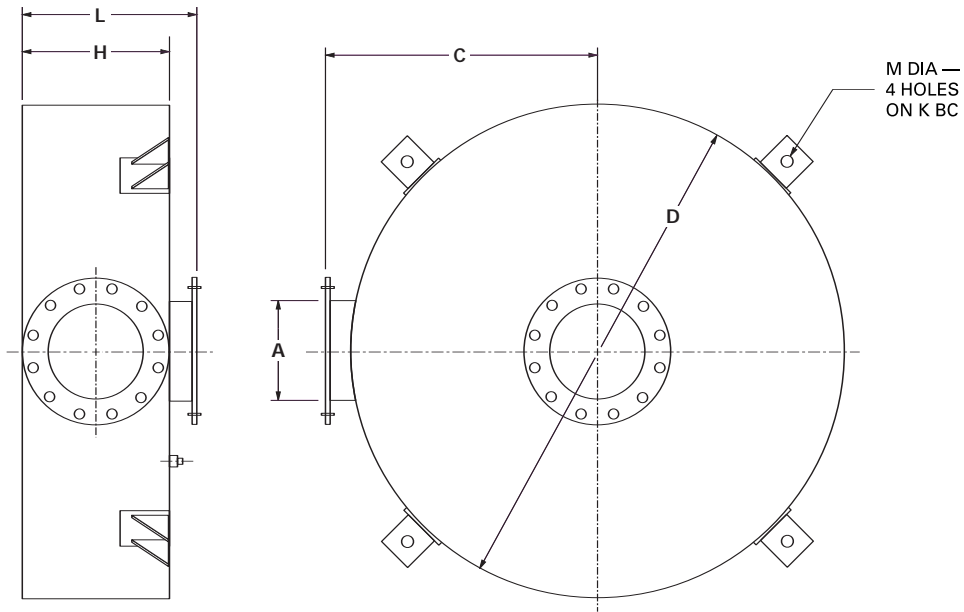


- Typical Reduction = 32 – 38 dB
- Aluminized/Carbon Steel Construction
- Stainless Steel Construction Available
- Contact Factory for Custom Fit Applications



Disk Silencers — “DCK2” Series

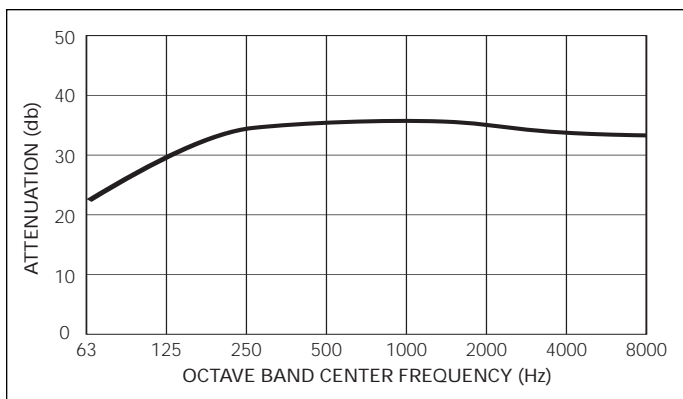
Critical Grade



Part Number	A	B	D	H	K	L	M	WT
DCK2-04-200751	4	16.5	27	8	30.50	11	1.00	140
DCK2-05-200752	5	18.0	30	10	33.50	13	1.00	250
DCK2-06-200753	6	19.5	33	12	36.50	15	1.00	310
DCK2-08-200754	8	26.5	47	14	50.50	17	1.00	520
DCK2-10-200755	10	29.5	53	16	56.50	19	1.00	750
DCK2-12-200756	12	34.0	62	18	66.50	21	1.25	925
DCK2-14-200757	14	36.0	66	24	70.50	27	1.25	1090
DCK2-16-200758	16	40.0	74	26	78.50	29	1.25	1500
DCK2-18-200759	18	45.5	85	28	89.50	31	1.25	1890

Note: Standard with 150 # ANSI drilled plate flange connections. Dimensions in inches, weights in pounds. Dimensions and weights are nominal and may vary slightly with production models.

Representative Attenuation Curve for “DCK2” Series Silencers

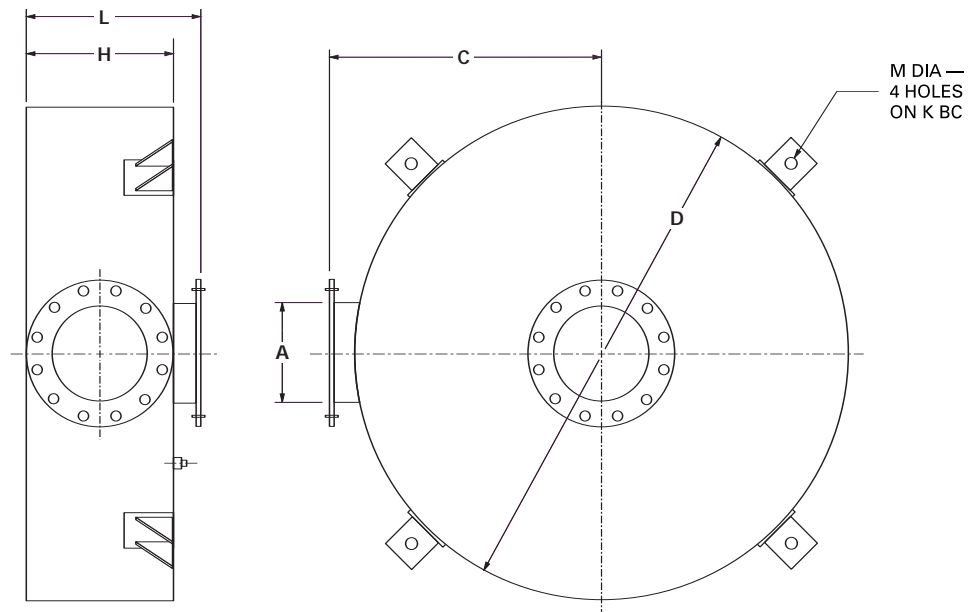


- Typical Reduction = 22 – 36 dB
- Internal Thermal/Acoustic Insulation
- Various Inlet/Outlet Configuration and Orientations Available
- Carbon Steel Construction
- Stainless Steel Construction Available
- Contact Factory for Custom Fit Applications



Disk Silencers — “DHK” Series

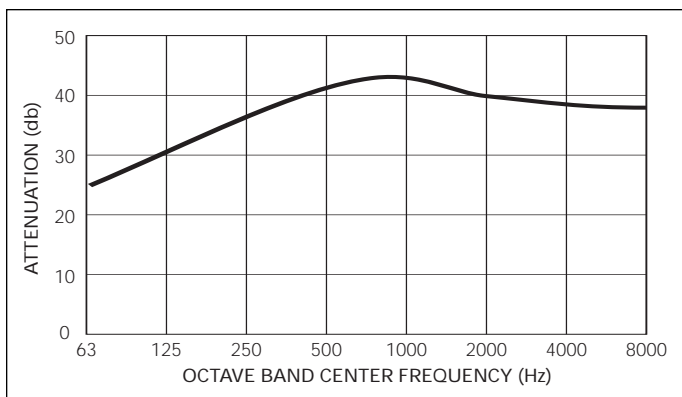
Hospital Grade



Part Number	A	B	D	H	K	L	M	WT
DHK-04-205349	4	20.5	35	8	38.5	11	1.00	200
DHK-05-205350	5	21.5	37	12	40.5	15	1.00	255
DHK-06-205351	6	23.0	40	12	43.5	15	1.00	400
DHK-08-205352	8	29.5	53	14	56.5	17	1.00	750
DHK-10-205353	10	32.5	59	16	62.5	19	1.00	925
DHK-12-205354	12	38.5	71	20	75.5	23	1.25	1245
DHK-14-205355	14	39.0	72	24	76.5	27	1.25	1300
DHK-16-205356	16	41.0	76	28	80.5	31	1.25	1590
DHK-18-205357	18	46.5	87	30	91.5	33	1.25	2045

Note: Standard with 150 # ANSI drilled plate flange connections. Dimensions in inches, weights in pounds. Dimensions and weights are nominal and may vary slightly with production models.

Representative Attenuation Curve for “DHK” Series Silencers

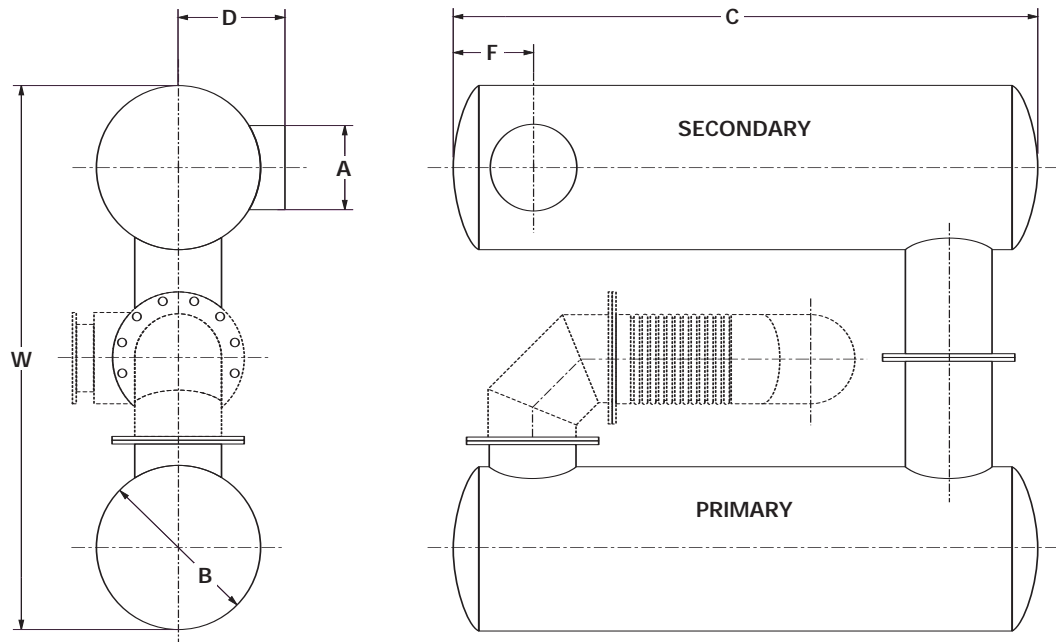


- Typical Reduction = 26 – 43 dB
- Internal Thermal/Acoustic Insulation
- Various Inlet/Outlet Configuration and Orientations Available
- Carbon Steel Construction
- Stainless Steel Construction Available
- Contact Factory for Custom Fit Applications



Tandem — “LPC” Series

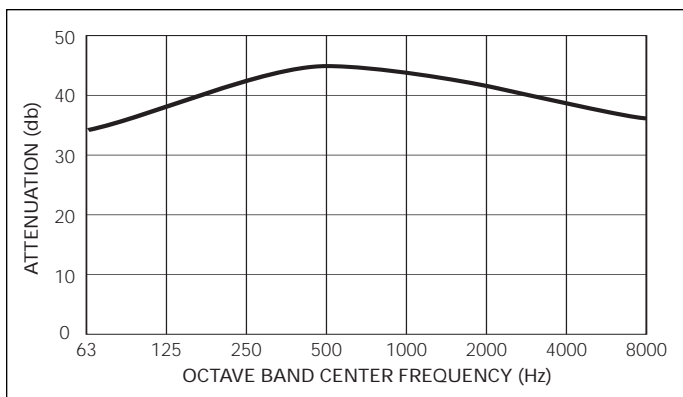
Critical Grade



Part Number	A	B	C	D	F	W	WT
LPC-04-200279	4.0	12.0	40.0	10.0	6.0	38.0	130
LPC-05-200280	5.0	14.0	53.0	10.0	7.0	42.0	196
LPC-06-200281	6.0	16.0	53.0	11.0	7.5	50.0	254
LPC-08-200282	8.0	16.0	53.0	11.0	8.5	54.0	275
LPC-10-200283	10.0	20.0	67.0	13.0	10.0	66.0	540
LPC-12-200284	12.0	22.0	67.0	15.0	11.5	74.0	645
LPC-14-200285	14.0	26.0	68.0	17.0	13.0	86.0	1010
LPC-16-200286	16.0	28.0	81.0	18.0	14.0	94.0	1500

Note: Standard with 150 # ANSI drilled plate flange connections. Dimensions in inches, weights in pounds. Dimensions and weights are nominal and may vary slightly with production models.

Representative Attenuation Curve for “LPC” Series Silencers

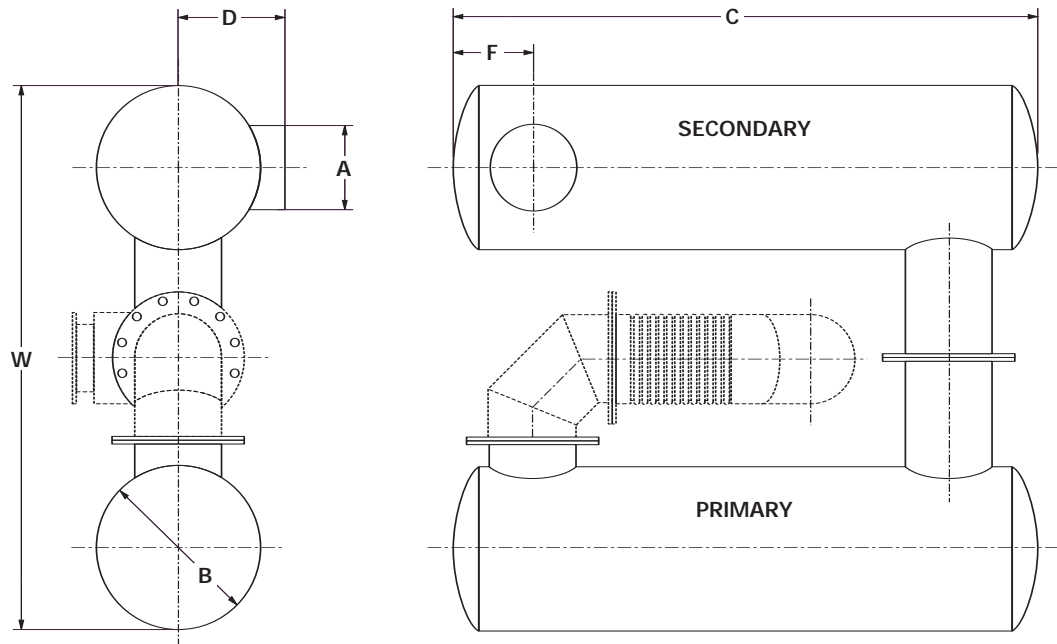


- Typical Reduction = 37 – 43 dB
- Internal Thermal/Acoustic Insulation
- Low Profile
- Aluminized/Carbon Steel Construction
- Stainless Steel Construction Available
- Contact Factory for Custom Fit Applications



Tandem — “LPH” Series

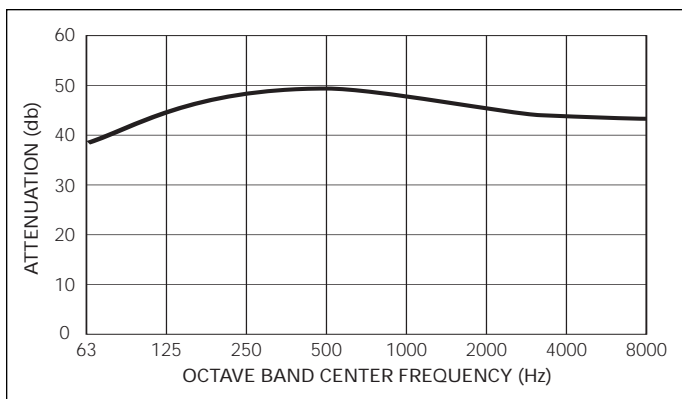
Hospital Grade



Part Number	A	B	C	D	F	W	WT
LPH-04-205101	4.0	12.0	52.0	10.0	6.0	38.0	168
LPH-05-205102	5.0	14.0	76.5	10.0	7.0	42.0	276
LPH-06-205103	6.0	16.0	65.0	11.0	7.5	50.0	315
LPH-08-205104	8.0	16.0	77.0	11.0	8.5	54.0	390
LPH-10-205105	10.0	20.0	90.0	13.0	10.0	66.0	720
LPH-12-205106	12.0	22.0	91.0	15.0	11.5	74.0	885
LPH-14-205107	14.0	26.0	104.0	17.0	13.0	86.0	1350
LPH-16-205108	16.0	28.0	129.0	18.0	14.0	94.0	2000

Note: Standard with 150 # ANSI drilled plate flange connections. Dimensions in inches, weights in pounds. Dimensions and weights are nominal and may vary slightly with production models.

Representative Attenuation Curve for “LPH” Series Silencers

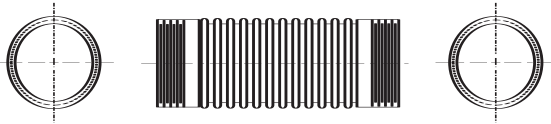


- Typical Reduction = 42 – 48 dB
- Internal Thermal/Acoustic Insulation
- Low Profile
- Aluminized/Carbon Steel Construction
- Stainless Steel Construction Available
- Contact Factory for Custom Fit Applications

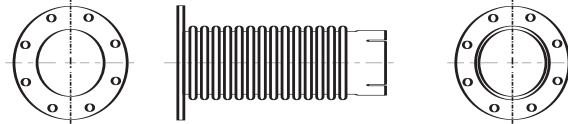


Engine Exhaust — Accessories

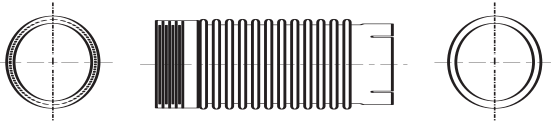
Male NPT/Male NPT



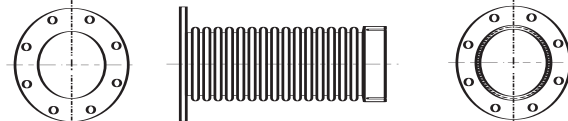
Flange/Slotted Cuff



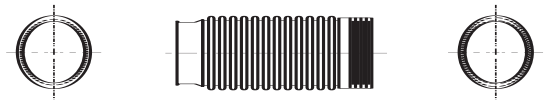
Male NPT/Slotted Cuff



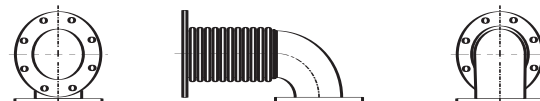
Flange/Female NPT



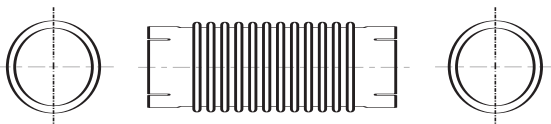
20° Lip Flange/Male NPT



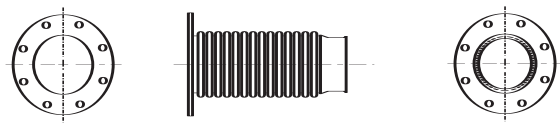
Flange/Flanged 90° Elbow



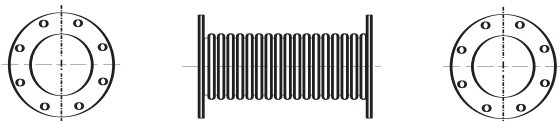
Slotted Cuff/Slotted Cuff



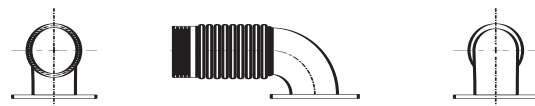
Flange/20° Lip Flange



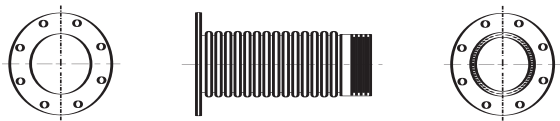
Flange/Flange



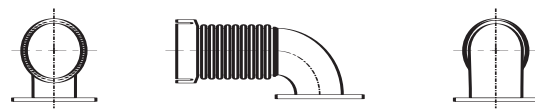
Male NPT/Flanged 90° Elbow



Flange/Male NPT

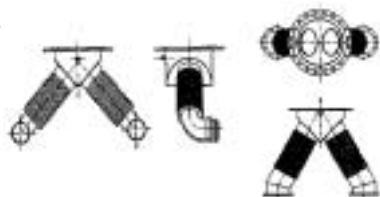


Female NPT/Flanged 90° Elbow



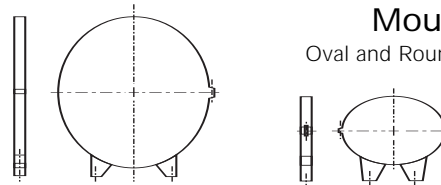
Wye Connectors

Available for various applications



Mounting Bands

Oval and Round Mounting Bands



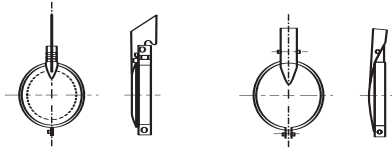
A wide variety of accessories are available to customize your silencer installation — Sure Seal Clamps, Insulation Blankets; Outlet Extensions; Rain Guards; Roof Thimbles; Bolt, Nut, Gasket Kits; Gasket Kits; Various Types Mounting Supports, etc.



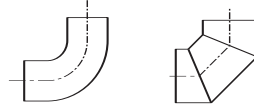
Engine Exhaust — Accessories

Rain Caps

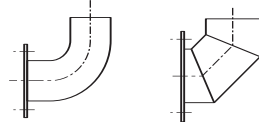
Available for Pipe or Tube Applications



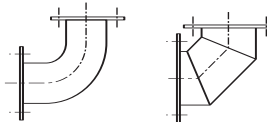
90° Short Radius Tube Elbow



90° Short Radius Elbow with Flange One End

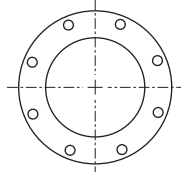


90° Short Radius Tube Elbow with Flange Both Ends



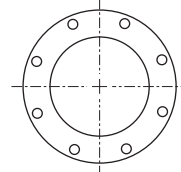
Flanges—Model PFL

Pipe Plate Flange



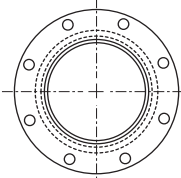
Flanges—Model TFL

Tube Plate Flange



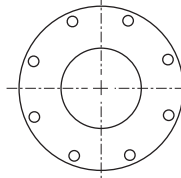
Flanges—Model FLT

Threaded Plate Flange



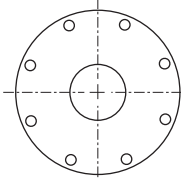
Flanges—Model REFL

Reducing Plate Flange

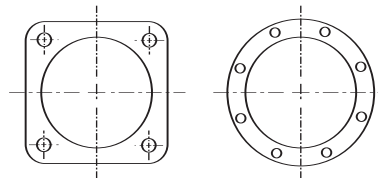


Flanges—Model DREFL

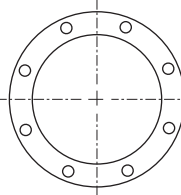
Double Reducing Plate Flange



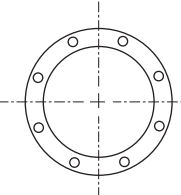
Special Flanges Caterpillar



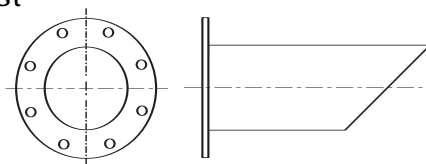
Special Flanges Detroit Deisel



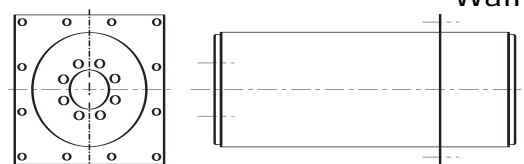
Special Flanges Cummins/Onan



Mitered Exhaust



Wall Thimbles



A wide variety of accessories are available to customize your silencer installation — Sure Seal Clamps, Insulation Blankets; Outlet Extensions; Rain Guards; Roof Thimbles; Bolt, Nut, Gasket Kits; Gasket Kits; Various Types Mounting Supports, etc.



Limited Warranty Guarantee

Limited Warranty Guarantee

Phillips & Temro Industries products are guaranteed for one year from date of purchase by the consumer against defects due to materials and the Company's workmanship only, as either and both of which the Company shall be the sole judge.

The sole obligation hereunder shall be to repair, or at the Company's option to replace products as aforesaid, provided same are returned "Transportation Prepaid" to the Company's nearest plant within the said period.

Other defects or failures due to improper or careless installation, storage or handling, or usage contrary to manufacturer's directions, design or specifications, as to any and all of which the Company shall be the sole judge, are specifically excluded from this guarantee.

No liability is accepted for return transportation charge, following repaid or replacement as aforesaid or for reinstallation costs. No liability for loss or damage of any nature or kind, whether arising out of or from the use of the product, whether or not defective, is assumed. No other expressed or implied warranties exist in the absence of special agreement.

