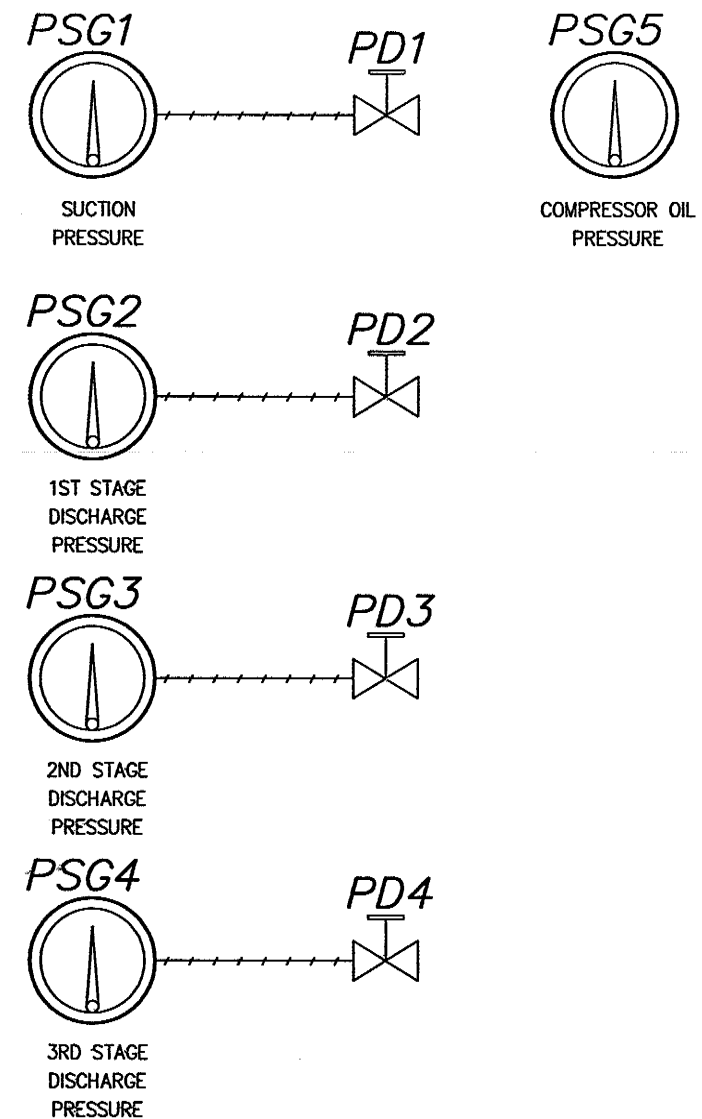


PANEL LEGEND

ITEM	PART NO.	QTY	MFR	MODEL NO.	DESCRIPTION
1	50236269	1	MURPHY		ENC-A-36X48X14-2DN3LL-MR
2	50226276	1	MURPHY		STD-P-30X48-FRNT-MR
	50226183	2	MURPHY		STD-P-30X2X14-LEG-MR
3	50225495	2	MURPHY		VERTICAL LEGEND HOLDER W/308936A.xls & 308936B.xls
TTD	50700597	1	MURPHY	TTD-H	"SELECTRONIC TATTLETALE" ANNUNCIATOR
	50700594	1	MURPHY	PSU-2-T	ANNUNCIATOR POWER SUPPLY
TDXM	10702748	1	MURPHY	TDXM-DC	24 POINT TEMPERATURE SCANNER
	50225798	1	MURPHY		GROUND BUS BAR, 12 HOLE X 1/2"
CR1-2	00006291	2	SQUARE D	8501-RSD34V53	HERMETICALLY SEALED 24 VDC RELAY, 5A
	00006286	2	IDEC	SY4S-05	RELAY SOCKET
	39161002	2	IR	1N4005	600V RECTIFIER DIODE
F1	00006164	2	GOULD	GAB-4	4 AMP FUSE (1 SPARE)
	00007690	1	PHOENIX	3005507	FUSE HOLDER
TB1-3	00008705	17	PHOENIX	3004362	TERMINAL BLOCK
	00005585	3	PHOENIX	3003020	END SECTION
	00007689	6	PHOENIX	0800886	END STOP
ESD	00006829	1	SQUARE D	9001-SKR9R	EMERGENCY STOP PUSHBUTTON
	00004101	1	SQUARE D	9001-KA3	N.C. CONTACT BLOCK, POLE 1
	00003914	1	SQUARE D	9001-KA53	N.C. CONTACT BLOCK, HERMETICALLY SEALED, POLE 2
SW1	00005983	1	C3CONTROLS	HSS02	POWER OFF-ON SWITCH, 10 AMP
	00006851	1	C3CONTROLS	CBFSR	1 N.O., 1 N.C. CONTACT BLOCK
	00005985	1	C3CONTROLS	SHWE	OPERATING HANDLE
	00005992	1	C3CONTROLS	TTW	LOCKING RING
PSG1	05701238	1	MURPHY	OPLFC-S-30	SUCTION PRESSURE "SWICHGAGE"
PSG2	05701226	1	MURPHY	OPLFC-S-160	1ST STAGE DISCHARGE PRESSURE "SWICHGAGE"
PSG3	05701252	1	MURPHY	OPLFC-S-400	2ND STAGE DISCHARGE PRESSURE "SWICHGAGE"
PSG4	05701211	1	MURPHY	OPLFC-S-1000	3RD STAGE DISCHARGE PRESSURE "SWICHGAGE"
PSG5	05704033	1	MURPHY	25P-100	COMPRESSOR OIL PRESSURE "SWICHGAGE"
PD1-4	55700208	4	MURPHY	PD8184-1/4X1/4	PULSATION DAMPENERS

NOTES:

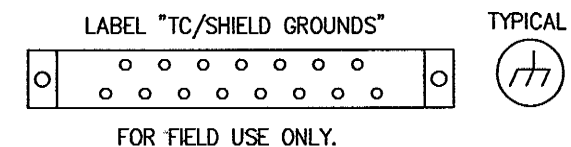
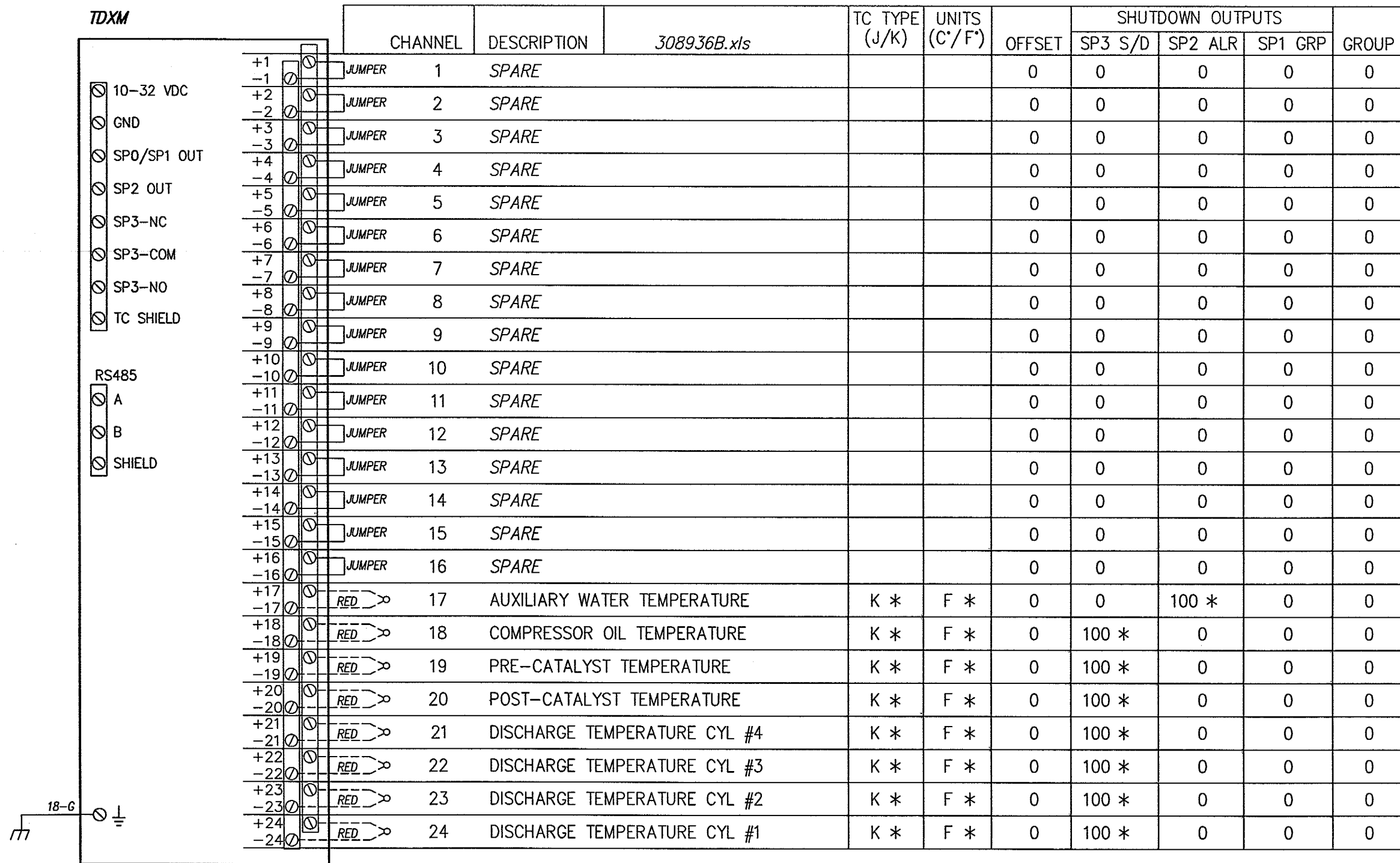
- FACTORY WIRING: _____
CUSTOMER WIRING: - - - - -
END USER WIRING:
TUBING: / / / / /
 - TUBING: 1/4 X .035 316 STAINLESS STEEL (WELDED)
FITTINGS: STEEL
 - "18-BL-TTD-1/1T6-B" REPRESENTS "AWG-WIRE COLOR-WIRE TAG"
WHEN JUMPER BARS ARE NOT UTILIZED, JUMPER WIRES SHOULD BE UNLABELED
USING WIRES OF EQUAL AWG & COLOR AS SOURCE.
 - ROUTE SENSOR LEADS SEPARATE FROM ALL OTHER WIRING.
 - MAXIMUM LENGTH OF SENSOR LEADS IS 500 FEET.
 - CAUTION: DISCONNECT ALL SENSOR LEADS BEFORE WELDING.**
 - THIS PANEL IS SUITABLE FOR USE IN CLASS I, DIV. 2, GROUP C&D HAZARDOUS LOCATIONS.
 - GROUND SYMBOLS WILL BE SHOWN PER THE FOLLOWING:
EARTH/NON-INCENDIVE CHASSIS/NON-INCENDIVE DC COM/CLOSE LOOP
-
- UNLESS OTHERWISE NOTED ALL DEVICES ARE SHOWN IN THE SHELF POSITION.
 - ALL WIRING TO BE 18 GA. UNLESS OTHERWISE NOTED.
 - EACH OF THE FIRST 48 INPUTS CAN BE CONFIGURED FOR CLASS A, B1, B2, C,
FOR ALARM OR SHUTDOWN, OR AS IGNORE, OR SPECIAL LOCKOUT.
SPARE SHUTDOWNS WILL BE DEFAULTED TO CLASS "A".
 - SET B2 TIMERS @ 30 SECONDS.
INPUT #45 IS SELECTABLE REMOTE RESET OR CLASS "A"
INPUT #46 IS SELECTABLE REMOTE LOCKOUT OR CLASS "A"
(INHIBITS CLASS "B1" & "B2" LOCKOUT TIMERS)
INPUT #47, #48 TYPICALLY USED FOR EMERGENCY STOP (OVERRIDES TEST TIMER)
DISPLAY #49 IS LOSS OF IGNITION (LESS THAN 90 VDC)
DISPLAY #50 IS OVERSPEED (INTERNAL, ON "T" MODEL ONLY)
DISPLAY #51 IS UNDERSPEED (ON "T" MODEL ONLY)
DISPLAY #52 IS MANUAL STOP (INTERNAL)
DISPLAY #60 WATCHDOG TIMER
DISPLAY #61 LOSS OF SPI LINK (INTERNAL, ON "T" MODEL ONLY)
DISPLAY #62 LOW DC VOLTAGE (ALARM)
DISPLAY #63 LOW BACKUP BATTERY (ALARM)
 - SENSOR INPUTS ARE PASSIVE SWITCHES. REMOVE FACTORY INSTALLED JUMPER FOR NORMALLY CLOSED SWITCHES.
 - NORMALLY OPEN SENSORS ARE RETURNED TO GROUND TO ACTIVATE ANNUNCIATOR.
 - FOR ADDITIONAL INFORMATION REFER TO INSTALLATION BULLETIN.
 - CONNECT POWER LEADS DIRECTLY TO BATTERY POSTS**



APPLY ELBOW 1/4" FITTING TO PD1-4

				DRAWN BY RB	
				CHK'D BY At 8/30/11	
				APP'D BY RW 8/30/11	
				DATE 8-16-11	
				SCALE NONE	
				SHEET 1 OF 3	
A	AS BUILT		8-30-11		
REV.	DESCRIPTION	DCN No.	DATE	CHK'D BY	
<p>THIS DOCUMENT, DRAWING, SKETCH, OR SCHEMATIC PLAN IS THE PROPERTY OF FRANK W. MURPHY MFR. AND COVERS SWICHGAGE®, CONTROLS AND/OR CIRCUIT ON WHICH U.S. & FOREIGN PATENTS HAVE BEEN ISSUED OR APPLIED FOR. NO PART MAY BE REPRODUCED OR USED WITHOUT THE CONSENT OF THE OWNER.</p> <p>MURPHY MFR. IS NOT RESPONSIBLE FOR COPIES OF THIS DRAWING NOT HAND SIGNED BY OUR ENGINEERS.</p>					
				<p>CONTROL SYSTEMS & SERVICES - ROSENBERG, TX</p>	
				<p>FOR HAGUE EQUIPMENT CO.</p>	
				<p>WIRING DIAGRAM</p>	
				<p>CAT 3516 ADEM III, 3 STG</p>	
				<p>YOUR NO. REF NO.</p>	
				<p>DWG. NO. REF.</p>	
				<p>50-30-8936 A</p>	

TDXM



TDXM NOTES:

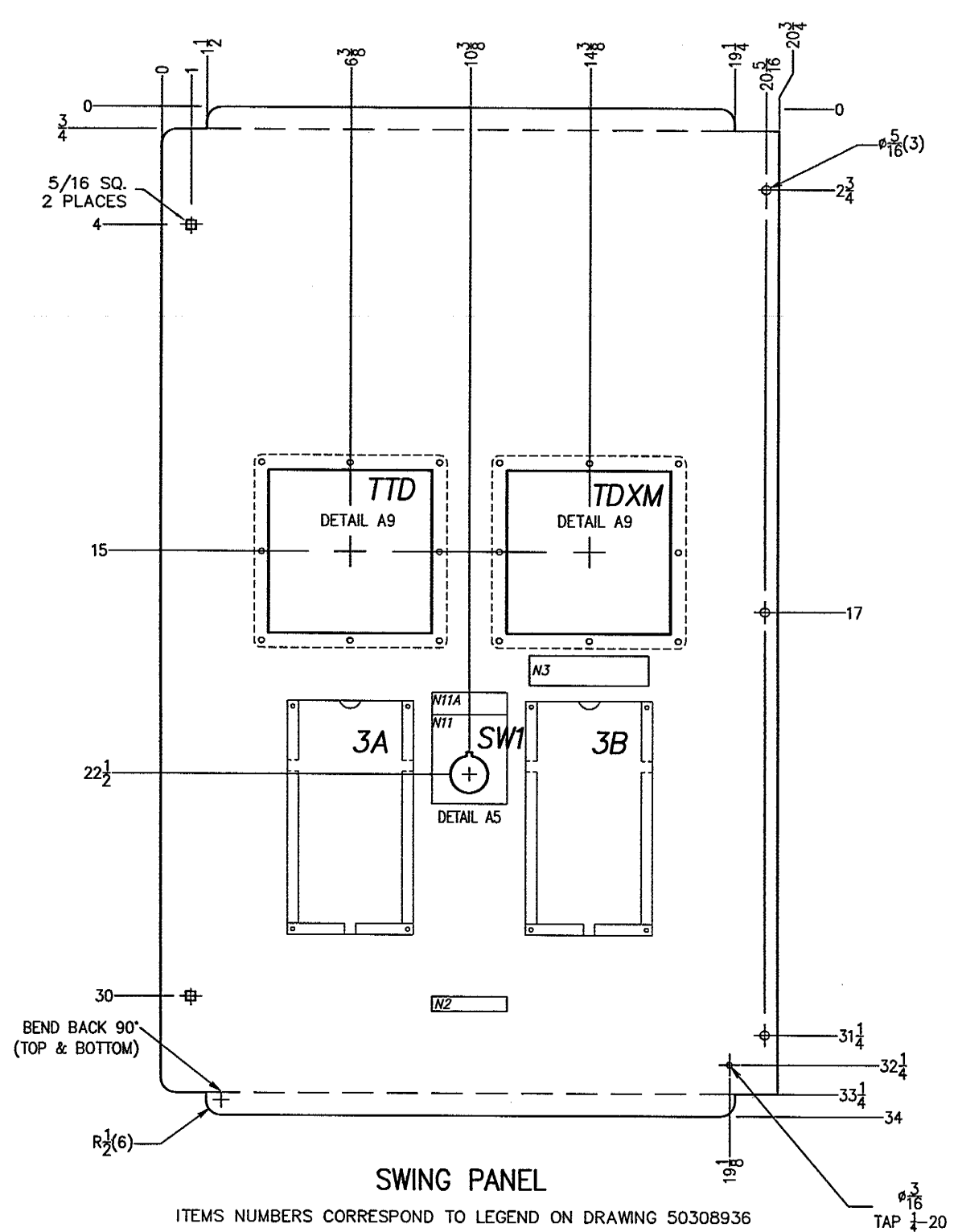
1. SP3-NC IS CLOSED TO SP3-COM AND SP3-NO IS OPEN TO SP3-COM FOR THE FAULT CONDITION.
2. THE GROUP A/DEVIATION FUNCTION, WHEN USED, IS TIED TO OUTPUT SP1. GROUP A SETTINGS MUST START WITH CHANNEL 1 AND END WITH DESIRED NUMBER.
3. THE GROUP B/DEVIATION FUNCTION, WHEN USED, IS TIED TO OUTPUT SP2. GROUP B SETTINGS MUST START WITH THE FIRST CHANNEL AFTER THE FIRST GROUP A AND END WITH THE DESIRED NUMBER.
4. ALL UNUSED CHANNELS MUST HAVE THE JUMPER INSTALLED.
5. FOR ADDITIONAL INFORMATION, REFER TO INSTALLATION BULLETIN.
6. (*) INDICATES FACTORY DEFAULT - SETTING TO BE DETERMINED BY USERS.

INSTALLATION NOTE:

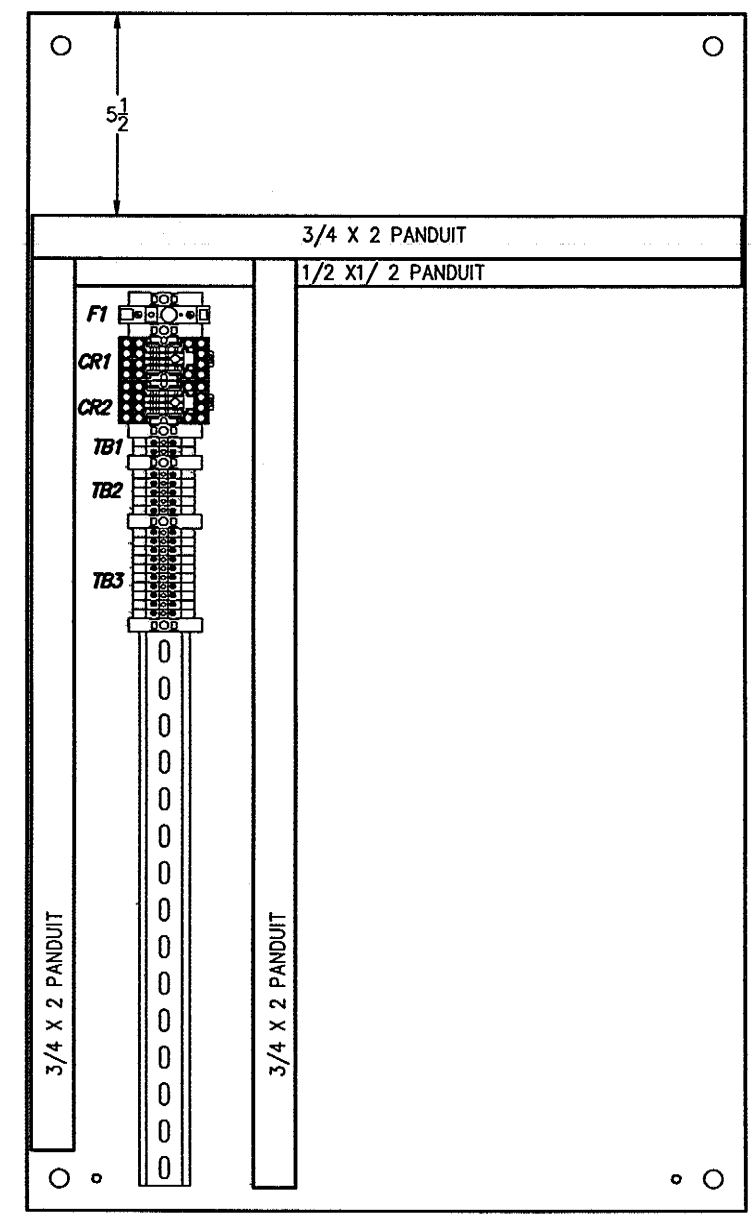
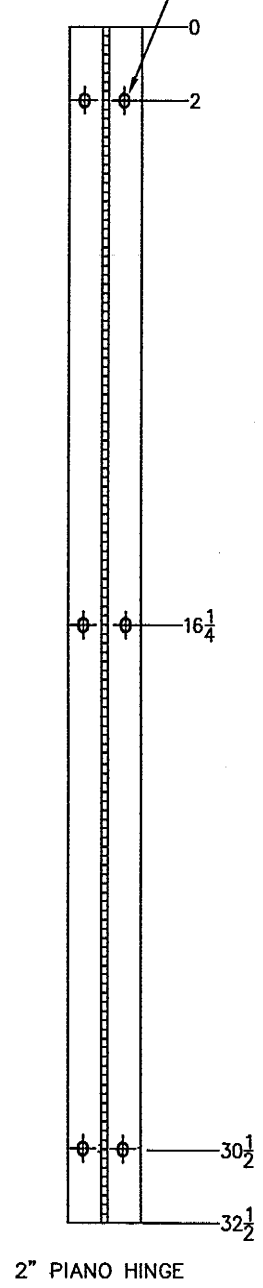
ONLY TWISTED SHIELDED, EXTENSION GRADE THERMOCOUPLE WIRE SHOULD BE USED. THE SHIELD GROUND (DRAIN WIRE) SHOULD BE GROUNDED AT THE T/C SHIELD GROUND. NO DISSIMILAR METALS SHOULD BE USED TO MAKE SPLICES IN THIS WIRE. FOR TYPE J AND K THERMOCOUPLES (-) IS COLOR CODED RED. TYPE J (+) IS WHITE, AND TYPE K (+) IS YELLOW. FOR OTHER TYPES, CONSULT A REFERENCE BOOK. THERMOCOUPLE WIRE SHALL BE RUN IN A SEPARATE CONDUIT FROM ANY POWER WIRES.

DRAWN BY RB		 CONTROL SYSTEMS & SERVICES - ROSENBERG, TX											
CHK'D BY 7/11 8/30/11													
APP'D BY 2/3/2/11		FOR HAGUE EQUIPMENT CO.											
DATE 8-16-11		WIRING DIAGRAM											
SCALE NONE		CAT 3516 ADEM III, 3 STG											
SHEET 3 OF 3		YOUR NO. REF NO.											
<table border="1"> <tr> <th>REV.</th> <th>DESCRIPTION</th> <th>DCN No.</th> <th>DATE</th> <th>CHK'D BY</th> </tr> <tr> <td>A</td> <td>AS BUILT</td> <td></td> <td>8-30-11</td> <td></td> </tr> </table>		REV.	DESCRIPTION	DCN No.	DATE	CHK'D BY	A	AS BUILT		8-30-11		DWG. NO. 50-30-8936 REV. A	
REV.	DESCRIPTION	DCN No.	DATE	CHK'D BY									
A	AS BUILT		8-30-11										

THIS DOCUMENT, DRAWING, SKETCH, OR SCHEMATIC PLAN IS THE PROPERTY OF FRANK W. MURPHY MFR. AND COVERS SWICHGAGE®, CONTROLS AND/OR CIRCUIT ON WHICH U.S. & FOREIGN PATENTS HAVE BEEN ISSUED OR APPLIED FOR. NO PART MAY BE REPRODUCED OR USED WITHOUT THE CONSENT OF THE OWNER. MURPHY MFR. IS NOT RESPONSIBLE FOR COPIES OF THIS DRAWING NOT HAND SIGNED BY OUR ENGINEERS.



1/4 X 3/8 SLOT (6)
BOLT HINGE TO
SWING PANEL USING
1/4-20 X 1/2
STN. STEEL BOLTS



TERMINAL BLOCK QUANTITIES	
TB NO.	QTY
TB1	2
TB2	5
TB3	10

BACKPLATE LAYOUT

REV.	DESCRIPTION	DCN No.	DATE	CHK'D. BY	SHEET
A	AS BUILT		8-30-11		1 OF 2

DRAWN BY RB
 CHK'D BY AT 8/30/11
 APP'D BY [Signature] 8/30/11
 DATE 8-16-11
 SCALE NONE

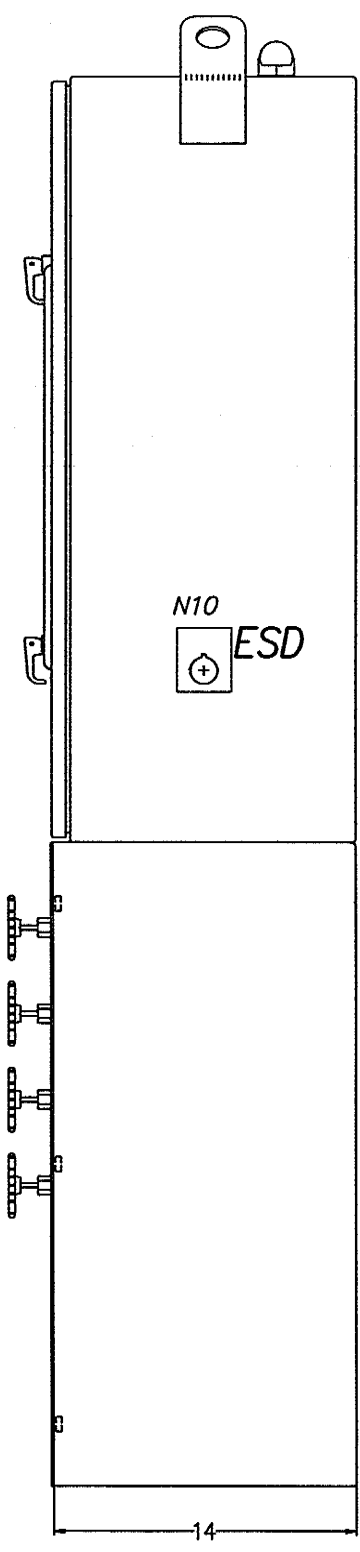
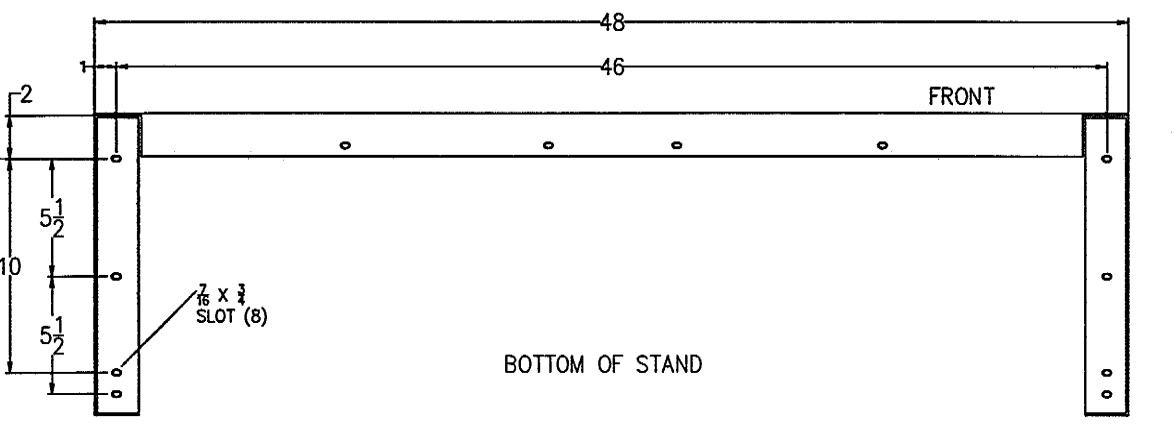
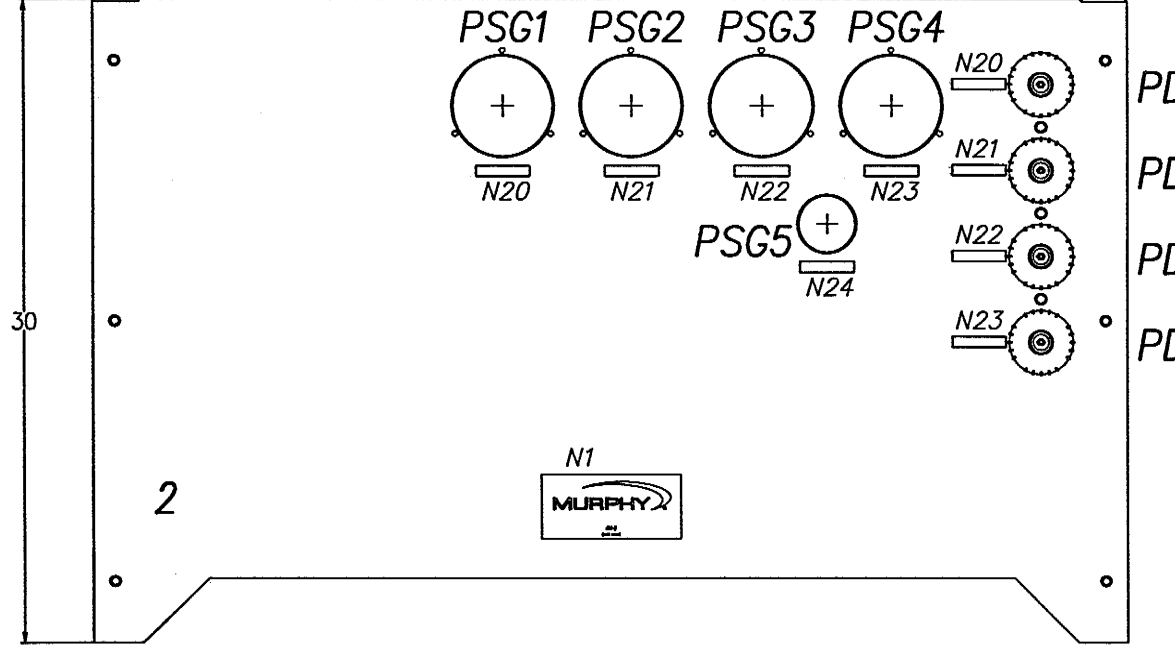
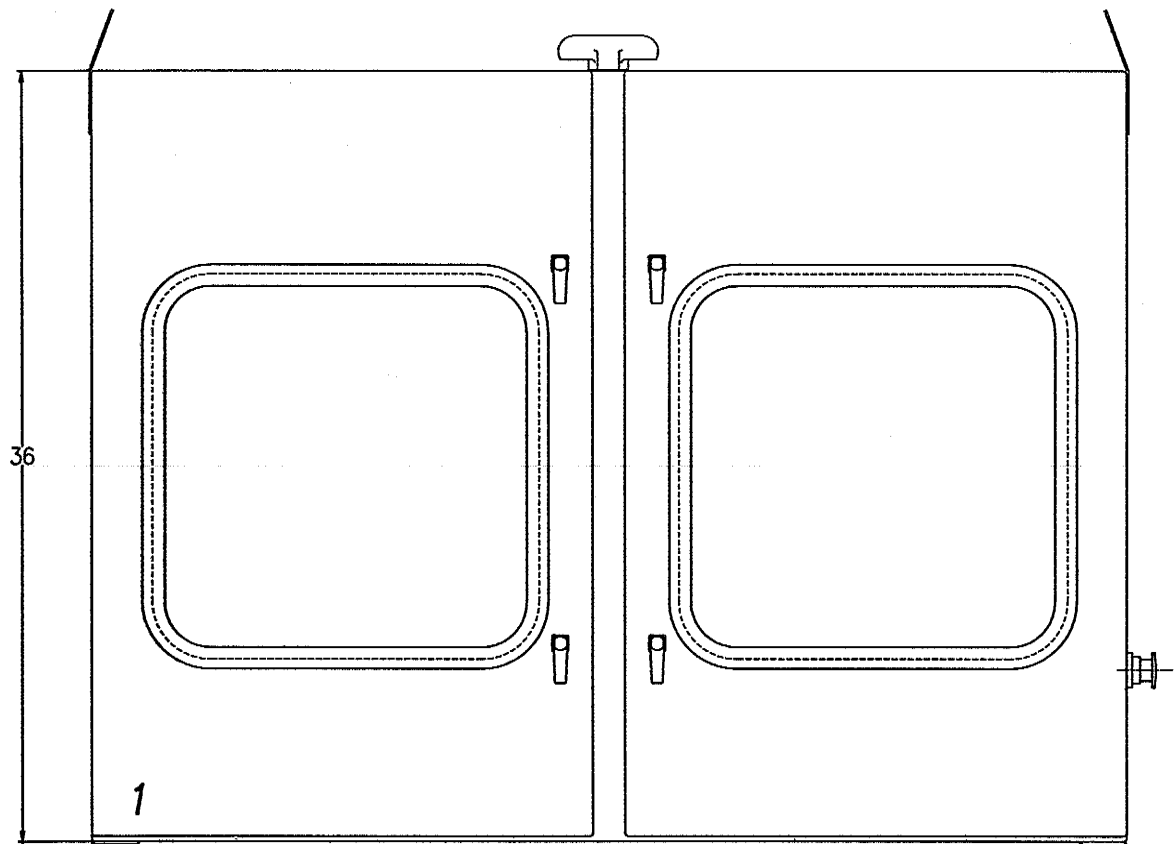
MURPHY
 CONTROL SYSTEMS & SERVICES - ROSENBERG, TX

FOR
HAGUE EQUIPMENT CO.
PANEL LAYOUT
CAT 3516 ADEM III, 3 STG

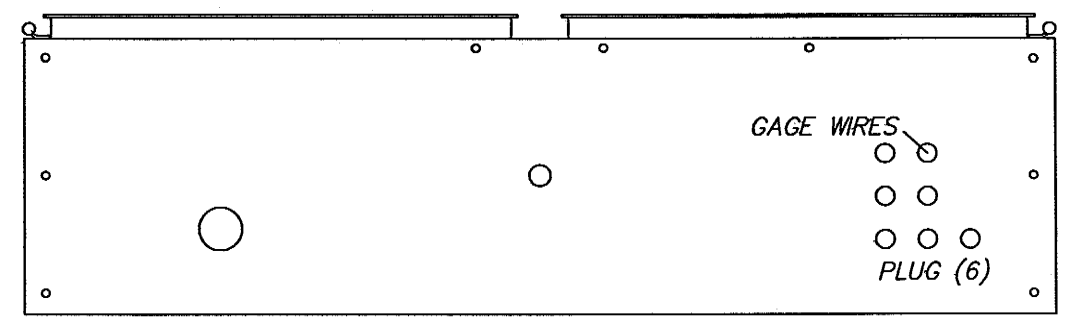
YOUR NO. REF NO.
 DWG. NO. 50-29-8936 REV. A

SWING PANEL MATERIAL 16 GA. 316 ST. STEEL	SWING PANEL FINISH PREBRUSHED	UNLESS OTHERWISE NOTED DIMENSIONS ARE IN INCHES .xx ±.030 ANGLES ±2 .xxx ±.010 ✓ 125 FRACTIONS ±1/16
--	----------------------------------	--

THIS DOCUMENT, DRAWING, SKETCH, OR SCHEMATIC PLAN IS THE PROPERTY OF FRANK W. MURPHY MFR. AND COVERS SWICHGAGE®, CONTROLS AND/OR CIRCUIT ON WHICH U.S. & FOREIGN PATENTS HAVE BEEN ISSUED OR APPLIED FOR. NO PART MAY BE REPRODUCED OR USED WITHOUT THE CONSENT OF THE OWNER.
 MURPHY MFR. IS NOT RESPONSIBLE FOR COPIES OF THIS DRAWING NOT HAND SIGNED BY OUR ENGINEERS.




INDIVIDUAL NAMEPLATE SCHEDULE				
QTY.	TAG #	LETTERS/TAG	DESCRIPTION	PART #
1	N1	B/W	Large serial no. tag	50225435
1	N2	B/W	Customer's tag (see order)	50225266
1	N3	B/W	Standard TDXM tag	50225879
1	N10	R/W	EMERGENCY STOP	50225436
1	N11	B/W	POWER > OFF - ON	50225344
1	N11A	B/Y	Standard power switch warning tag	50226313
2	N20	B/W	SUCTION > PRESSURE	50225266
2	N21	B/W	1ST STAGE DISCHARGE > PRESSURE	50225266
2	N22	B/W	2ND STAGE DISCHARGE > PRESSURE	50225266
2	N23	B/W	3RD STAGE DISCHARGE > PRESSURE	50225266
1	N24	B/W	COMPRESSOR OIL > PRESSURE	50225266



BOTTOM VIEW LESS DOORS

DO NOT KNOCK OUT
UNUSED HOLES IN STAND

				DRAWN BY RB		 CONTROL SYSTEMS & SERVICES - ROSENBERG, TX FOR HAGUE EQUIPMENT CO. PANEL LAYOUT CAT 3516 ADEM III, 3 STG
				CHK'D BY AT 8/30/11		
				APP'D BY RW 8/30/11		
				DATE 8-16-11		
				SCALE NONE		SHEET 2 OF 2
A	AS BUILT		8-30-11			
REV.	DESCRIPTION	DCN No.	DATE	CHK'D BY		
THIS DOCUMENT, DRAWING, SKETCH, OR SCHEMATIC PLAN IS THE PROPERTY OF FRANK W. MURPHY MFR. AND COVERS SWITCHGAGE®, CONTROLS AND/OR CIRCUIT ON WHICH U.S. & FOREIGN PATENTS HAVE BEEN ISSUED OR APPLIED FOR. NO PART MAY BE REPRODUCED OR USED WITHOUT THE CONSENT OF THE OWNER. MURPHY MFR. IS NOT RESPONSIBLE FOR COPIES OF THIS DRAWING NOT HAND SIGNED BY OUR ENGINEERS.						
				YOUR NO.		REF NO.
				DWG. NO.		REV.
				50-29-8936		A