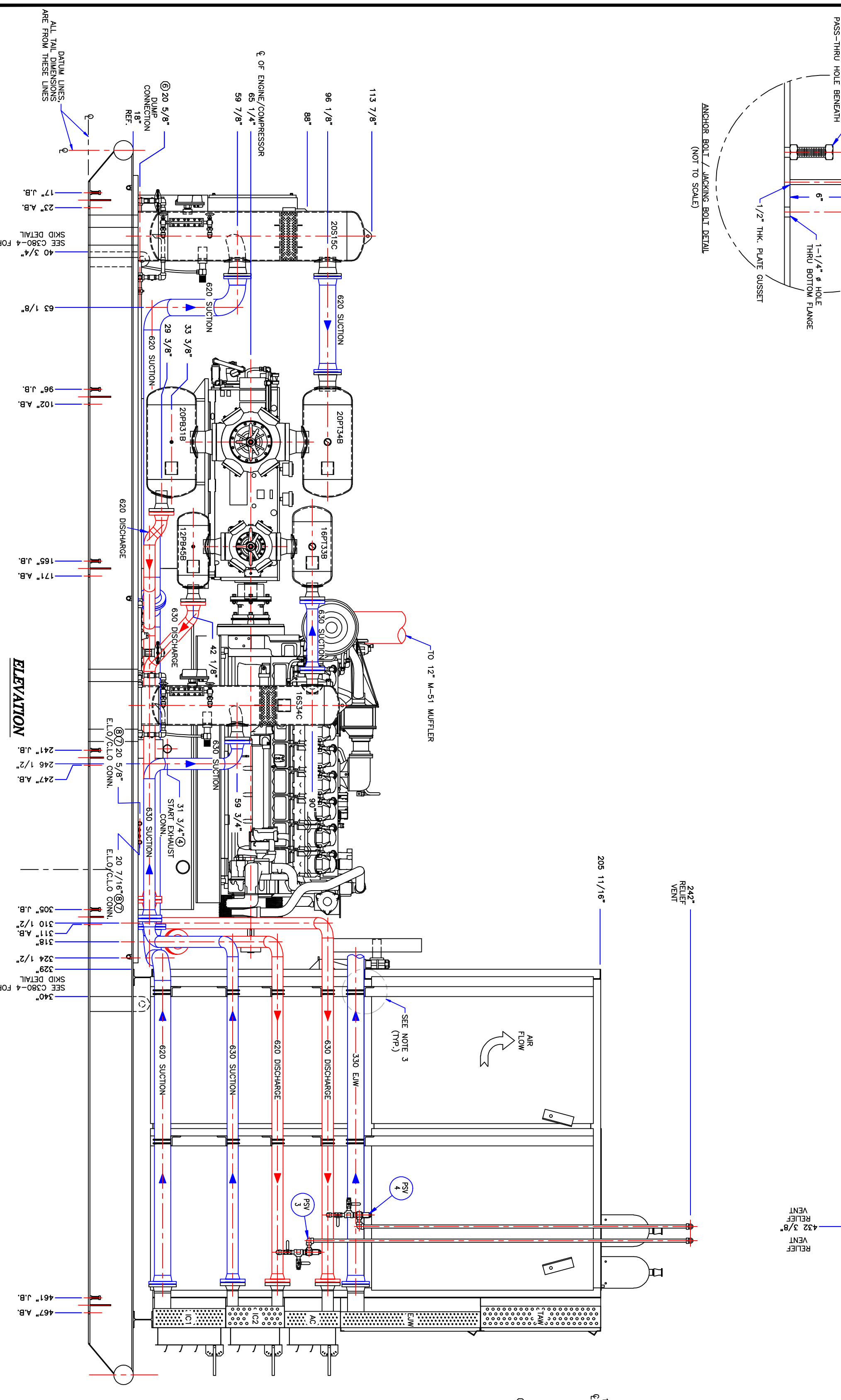
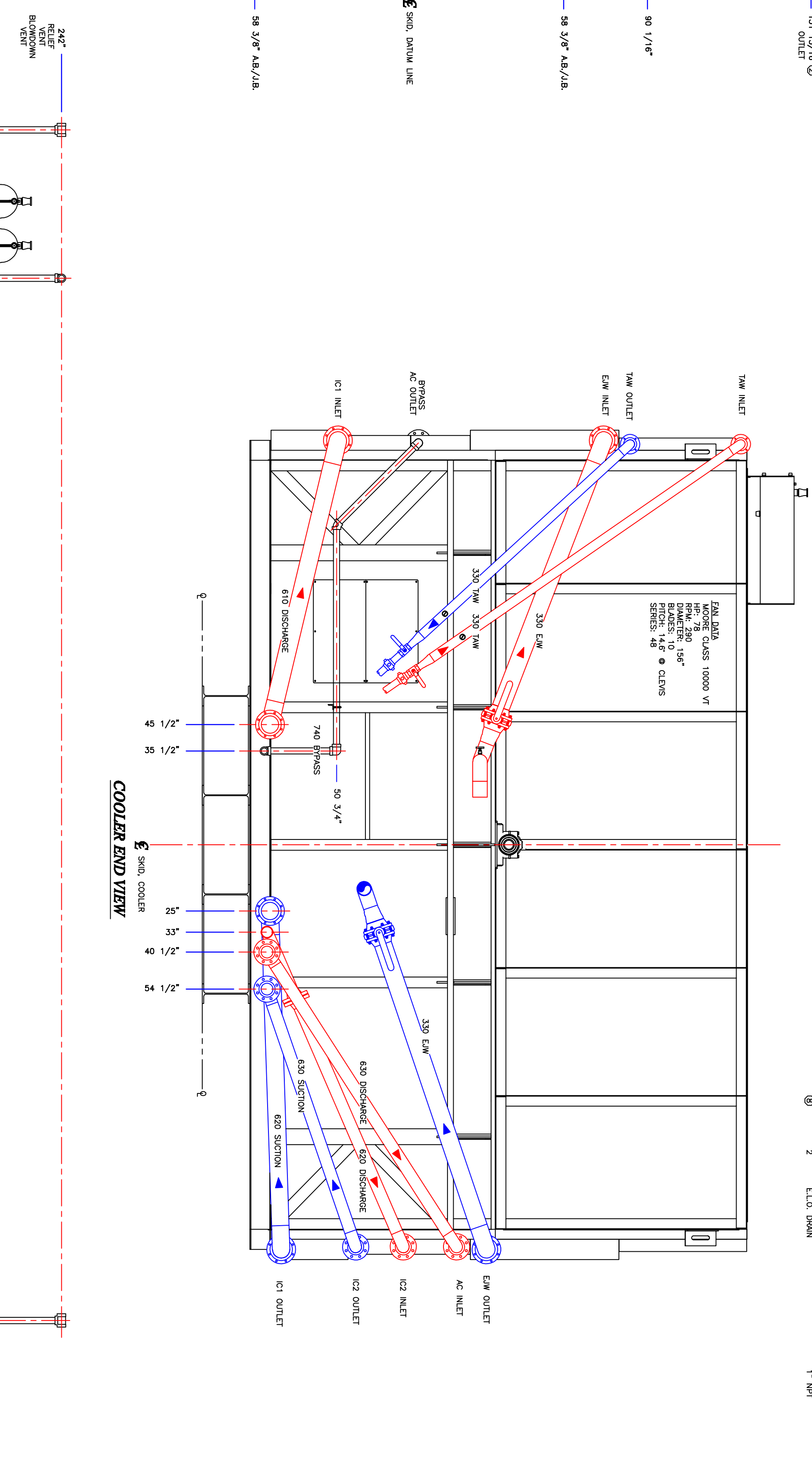


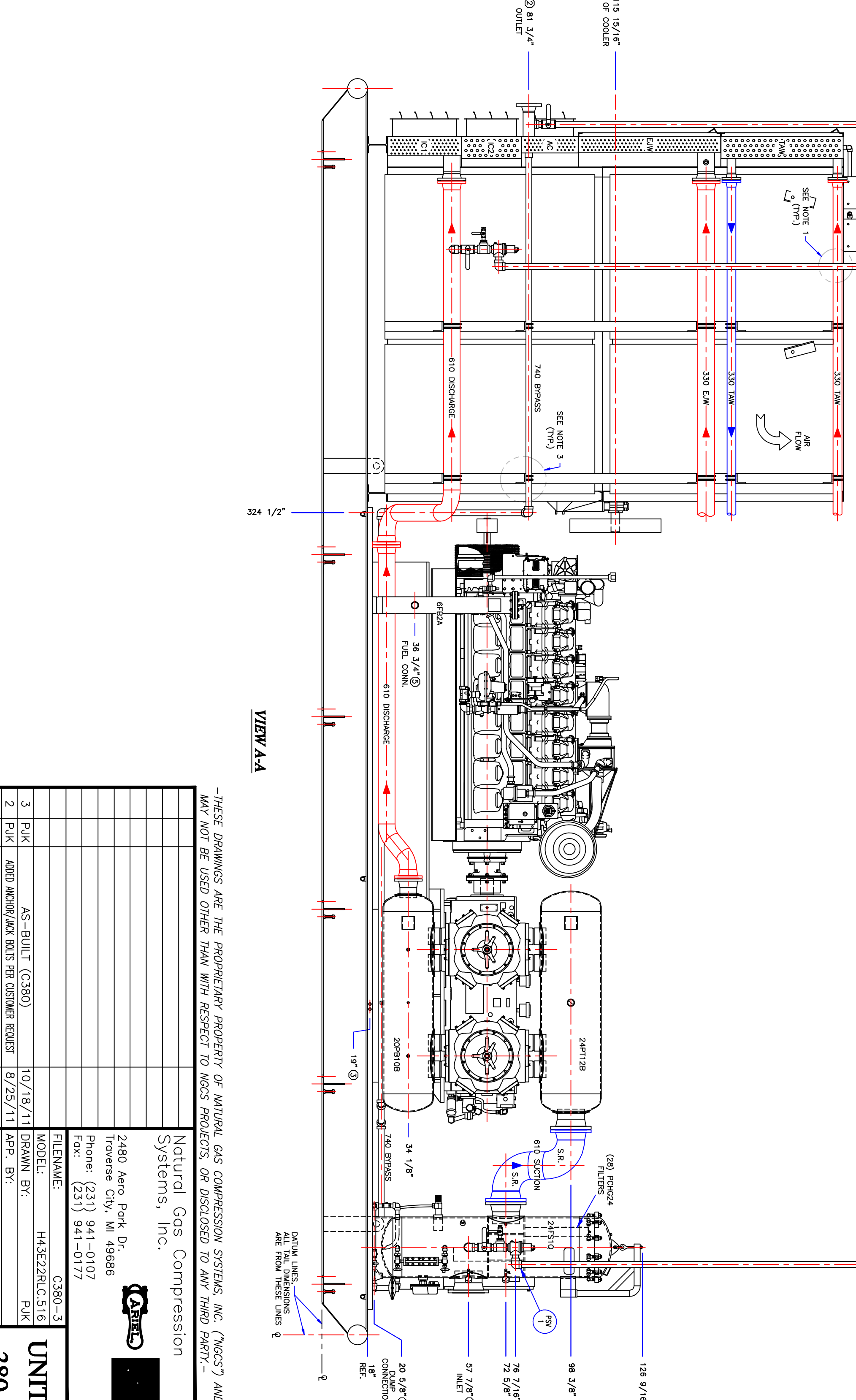
PLAN
 CAT 3516 P/E / INEL-JOH-4



ELEVATION



COOLER END VIEW



VIEW A-A

CONN. QTY.	DESCRIPTION	CONNECTION
1	INLET SCRIBBER CONNECTION	10" 150# BR
1	FINAL DISCHARGE CONNECTION	4" 300# BR
2	PACING VENT & BISTANCE PIECE DRUM	1/4" NPT
1	STARTER EXHAUST	3" NPT
1	L.P. FUEL INLET	2" NPT
2	SCRIBBER DUMP CONNECTION	1" NPT
2	C.L.O. DRAIN	1" NPT
2	E.L.O. DRAIN	1" NPT

FABRICATION NOTES
 1. SUPPORT VENT SPACES OFF EAW PIPING OR COOLER USING 2X27 1/2" ANGLE W/ WELDS.
 2. SUPPORT VENT SPACES OFF FUEL PIPING USING 2X27 1/2" ANGLE W/ WELDS.
 3. SLOPE TO INBOARD SUPPORTS ARE TO FULL DEPTH SLOPE INDICATED.
 4. SLOPE TO OUTBOARD SUPPORTS ARE TO FULL DEPTH SLOPE INDICATED.
 5. SLOPE TO SUPPORTS INDICATED BY DOTTED LINE IS TO BE INDICATED USING 4" X 1/2" ANGLE W/ BEAT ALL PIPING TO SUPPORTS.

THESE DRAWINGS ARE THE PROPRIETARY PROPERTY OF NATURAL GAS COMPRESSION SYSTEMS, INC. (NGCS) AND MAY NOT BE USED OTHER THAN WITH RESPECT TO NGCS PRODUCTS OR DISCLOSED TO ANY THIRD PARTY.

Natural Gas Compression Systems, Inc.

2480 Aero Park Dr.
 Traverse City, MI 49666
 Phone: (231) 941-0107
 Fax: (231) 941-0177

FILENAME: C380-3
 MODEL: AS-BUILT (C380)
 DRAWN BY: PJK
 DATE: 10/18/11

ISSUED FOR APPROVAL: 9/25/11
 DATE: 7/23/11

REVISION LOG

REV	BY	DESCRIPTION	DATE
1	PJK	ISSUED FOR APPROVAL	7/23/11
2	PJK	ADD ANCHOR/ JACK BOLT PER CUSTOMER REQUEST	8/25/11
3	PJK	AS-BUILT (C380)	10/18/11

GENERAL ASSEMBLY

UNIT 380