

H & H Technical, LLC

26 Columbus Drive
Parkman, Wyoming 828381

Phone +01 (307) 672-0743

hds@wavecom.net

GENERAL INFORMATION AND CORPORATE HISTORY OF H & H TECHNICAL, LLC Sheridan, WY 82801 USA

H & H Technical, LLC., incorporated in 2004, provides oil and gas industrial designing and manufacturing services - specializing in the design, installation, and commissioning of gas processing equipment. accordingly, we have designed, and fabricated gas processing facilities ranging in through-put capacity from 100 MSCFD to 60 MMSCFD; since 2004, we have developed projects ranging from a few hundred thousand dollars to millions and we have the expertise to respond and execute solutions accordingly to a project's size.

The roots of our company's expertise extend from 1976, with H & H partner Mike Harkins & Bill Hamilton's (retired) work at Process Equipment Company, a gas processing equipment design and manufacturing business where the two met. Bill went on to form his own company in the gas processing business, Hamilton Engineering, in 1986, with Mike joining him at its start-up. The company grew with the addition of Bill's son and H & H partner Brian Hamilton in 1996. With Bill's retirement, Mike and Brian carried on the business as H & H Technical. In recent years, H & H Technical and W.L. Hamilton Engineering have been instrumental in the design and manufacturing of over 400 gas processing units, amine treating units, diesel topping units and sulfur recovery units. Including our experience with Process Equipment Corp., we have been involved with over 700 processing units. We're proud of our history providing our clients with over 30 years of experience in the gas processing business.

With our experience and our ability to execute demanding projects, we have built a fine reputation in North America for our technical work in the office, in the shop, and in the field. This reputation has led to projects commissioned from outside the United States, and we developed our capacities for the international work that our drive for professional excellence has generated. As a result, we gained the additional gas processing experience and capability for international projects we developed from

providing solutions for facilities in other countries, including Nigeria, China, and Indonesia.

We use the latest version of Bryan Research and Engineering's ProMax program for process simulations. Our drafting department uses the latest version of AutoCad. to draw all skids, vessels, and piping, which gives three dimensional drawings complete with spool pieces and material lists. We also can be frequently found in our "office away from the office", the gas field, starting up a new H & H Technical designed gas processing facility.

At the present time (2023) we are involved in a 300 MMSCFD Cryo plant going to the Delta region of Nigeria providing computer simulations, equipment design, equipment purchasing support, electrical and instrument decisions among many other support roles.

DESIGN AND PLANNING SERVICES

H & H Technical LLC., a Wyoming corporation, offers a full range of consulting, and design, services to meet the ever-changing needs of today's gas industry. A partial list of capabilities, services, and references follows:

Capabilities:

- Design and planning of skid-mounted gas processing facilities.
- Commissioning and start-up services.
- Process design calculations performed using the Bryan Research and Engineering Simulation Program.
- Process calculations to determine optimum plant operating conditions on existing plants.
- Drafting capabilities, including use of the latest version of AutoCAD drafting system as it evolves.
- Feasibility studies on gas related projects, including, but not limited to gas

processing units, gas transportation, gas injection, gas compression, gas clean up, and dew point control plants.

- Design and planning of amine plants to remove hydrogen sulfide and/or carbon dioxide from produced gas.
- Design and planning of fractionation facilities to produce propellant grade propane, iso-butane, and n-butane for the propellant industry.
- Process and equipment sizing to determine used plants' capabilities in new installations.

Field Services:

- Complete commissioning and start-up assistance is included with all H & H Technical LLC-equipment when required.
- Schools covering all aspects of the gas processing industry.
- Process trouble shooting on existing plants.
- Supervision and inspection of equipment being installed.

References:

The following is a small sampling of H & H Technical's and W.L. Hamilton's many satisfied clients. Parties interested in verifying the capabilities and reliability of H & H Technical LLC, are invited to contact any of these clients for further information. Please contact us for the most recently updated listing if necessary.

AMERADA HESS
Duwayne Perry
(707)374-6461

Mini Gas Plant for Dew Point Control
40,000 MSCFD, Davis, California

AMERADA HESS	4,000 MSCFD Propane/Natural Gas Blending Unit to control BTU, California.
AMOCO	1,000 BOPD Crude Oil Stabilizer Design only, Casper, WY.
ARKLA Steve Huey (318)429-2956	Five Mini Gas Processing Plants Locations: Homer, Louisiana; Ida, Louisiana; Elm Grove, Louisiana; Shreveport, Louisiana; Athens, Louisiana.
BALCRON OIL CO. Mike McNamara 1601 Lewis Avenue Billings MT 59102 (406) 259 7860	6,000 MSCFD Mini Gas Plant, Casper, Wyoming. (Made for Maxus Energy Co.)
BREA CANON John Duhon	7,000 MSCFD Mini Gas Plant Torrance, California.
BREITBURN ENERGY Jackson Washburn Beach, California. 1991 3415 S. Sepulveda Blvd., Ste 330 Los Angeles, CA 90034 (310) 431-5525	1,500 MSCFD Mini Gas Plant, Seal
CAPITOL OIL CORPORATION Brian Sway (916)929-4534	40,000 MSCFD Mini Gas Plant for Dew Point Control, Davis, California.
CLAIBORNE ENERGY Jim McAuley Lubbock, Texas 806-747-1070	100,000 GPD Fractionation Unit designed to produce instrument grade propane, Iso-Butane and N-Butane
D-GAS, LLC Don York	100,000 gal/day propellant grade Fractionation Unit, Monroeville,

(713)893-3520	Alabama.
DIAMOND SHAMROCK (now Maxus Energy)	1,000 MSCFD Mini Gas Plant Monroe, LA.
ENERGY DEVELOPMENT CORP. Brian Deaver	2,500 BOPD capacity Crude Oil Stabilizer & Gas Processing Plant, Frisco City, Alabama.
ENVERON	2,000 MSCFD JT Plant, Michigan.
ENVERON	1,500 MSCFD JT Plant, Michigan.
GAS COMPRESSION SERVICES Larry Hague	30,000 MSCFD Amine Plant, northern Michigan.
GOODWAY REFINING, LLC Dale Levins 4745 Ross Road Atmore, AL 36502 904-256-2003	4000 BOPD Diesel & Solvent Unit
GREELEY GAS Bob Dever	5 MMSCFD Gas Processing Plant, LaMar, Colorado.
HUX OIL CO.	1,000 MSCFD Propane/Natural Gas Blending Unit for BTU Control, eastern Illinois.
INTERENERGY CORP. Bret Ketcham HILAND GAS PLANT P. O. Box 482 Worland, WY 82401 (307) 347-8406	Design & Consulting to double the capacity of their present plant. Inlet slug catchers designed for 400 BPD.

LEMIGAS

Arief Soesilo
Jl. Aditiawarman No. 40
Kebayoran Baru
Jakarta, 12160 Indonesia
62-21-739-4588

Demo plant consisting of a 4 Stage
Compressor, dry bed dehydrator,
LNG plant, & numerous meters
for training Lemigas personnel

MANISTEE GAS

Dwain Immel
616-941-9203

15,000 MSCFD Mini Gas Plant,
Manistee, Michigan.

MERRION OIL & GAS

George Sharpe
(505)327-9801

3,000 MSCFD Mini Gas Processing
Plant, Farmington, New Mexico.

NORAM Field Services

Mark Davidson
P. O. Box 307
Waskom, TX 75692

15 MMSCFD refrigerated JT plant
operating at -101° F

NOMEKO

Dick Redmond

10,000 MSCFD Mini LPG Plant,
Michigan.

NOMEKO

Dick Redmond

5,000 MSCFD Mini LPG Gas Plant,
Michigan.

PALMER PETROLEUM

Clarence Curtis

3,500 MSCFD Mini Gas Plant, East
Texas.

PALMER PETROLEUM

Clarence Curtis

2,500 BOPD capacity Crude Oil
Stabilizer & Gas Processing Plant, Monroeville,
Alabama.

PT SUMBER DAYA KELOLA

Edwargo Setjadiningratt

6,000 MSCFD Gas Compressor, Indonesia
6,000 MSCFD Amine Plant, Indonesia
6,000 MSCFD Mini LPG gas plant, Indonesia,
300 GPM Amine plant, Indonesia,

	5,000 MSCFD Mini LPG gas plant, Indonesia
REDSTONE RESOURCES Rollie Debruyne 1999 Broadway, Suite 2550 Denver, CO 80202	15 MMSCFD Amine Plant
SANTA FE Arief Soesilo	50 MMSCFD Refrigeration plant designed to operate at -40° F Indonesia
SHELL OIL	2,500 MSCFD Amine Plant (Design and Start up only) Baker, Montana.
SHELL OIL	2,500 MSCFD Amine Plant (Design, and Startup).
SHELL OIL	2,000 MSCFD Mini Gas Processing Plant, Baker, Montana.
TEJAS POWER CORPORATION Tom Siguaw	30,000 BPD/400 MMSCFD Ethane/Gas Blending Unit, Texas.
TORCH OPERATING Phil Tibbs Santa Maria, CA 93455	Two Crude Oil Stabilizer Units 3,000 BOPD each, Frisco City, 201 South Broadway Alabama. Two Gas Processing Units, 25,000 Gal/Day each, Frisco City, Alabama.
TORCH OPERATING	1,500 MSCFD Mini Gas Plant, East Texas. 1
TRIPLE T OIL CO.	2,000 MSCFD Mini Gas Plant, Casey, Ill. Russelville, Illinois.
TUCKER GAS	1,000 MSCFD LNG Plant (Design Only), Indiana.
UNOCAL/BREITBURN ENERGY Jackson Washburn	2,000 MSCFD Amine Plant, Seal Beach, California.

310-915-7272

UNION PACIFIC RAILROAD CO.

1,000 MSCFD Mini JT Plant,
Cheyenne, Wyoming.

WILLIFORD ENERGY CO.

Douglas Storts
1323 East 71st, Suite 323
Tulsa OK
(918) 493-2300 ext 227

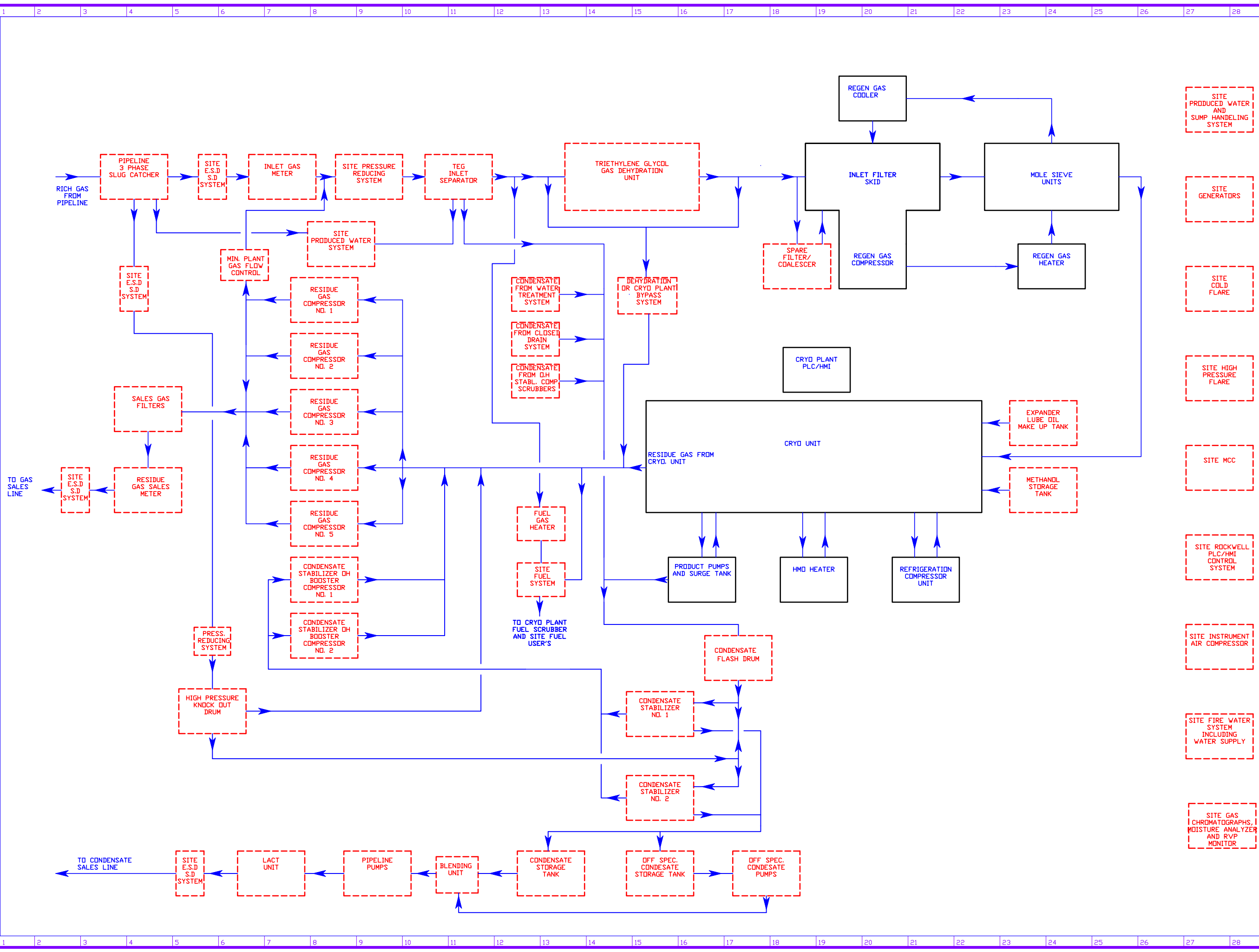
6 MMSCFD Gas Processing Plant,
Kit Carson, Colorado.

“A Picture Is Worth a Thousand Words”

A small sampling of recent projects.

NOTES:

(1) EQUIPMENT IN BLACK BOXES ARE INCLUDED IN THE USED UOP RUSSELL CRYO PLANT, EQUIPMENT IN DOTTED BOXES ARE NOT INCLUDED IN THE UOP RUSSELL PLANT.



- SITE PRODUCED WATER AND SUMP HANDLING SYSTEM
- SITE GENERATORS
- SITE COLD FLARE
- SITE HIGH PRESSURE FLARE
- SITE MCC
- SITE ROCKWELL PLC/HMI CONTROL SYSTEM
- SITE INSTRUMENT AIR COMPRESSOR
- SITE FIRE WATER SYSTEM INCLUDING WATER SUPPLY
- SITE GAS CHROMATOGRAPHS, MOISTURE ANALYZER AND RVP MONITOR

REV.	ITEM	BY	DATE
REVISIONS			

H & H TECHNICAL LLC
 1949 SUGARLAND DRIVE, SUITE 134
 SHERIDAN, WYO. 82801 307-672-0743



UTOROGU GAS PLANT EXPANSION PROJECT L1901
 SITE EQUIPMENT
 BLOCK DIAGRAM

MBH DRAWN BY	APPROVED BY	SCALE	REV.
1014 JOB NO.	9/25/2019 DATE	1014-001 DRAWING NO.	11



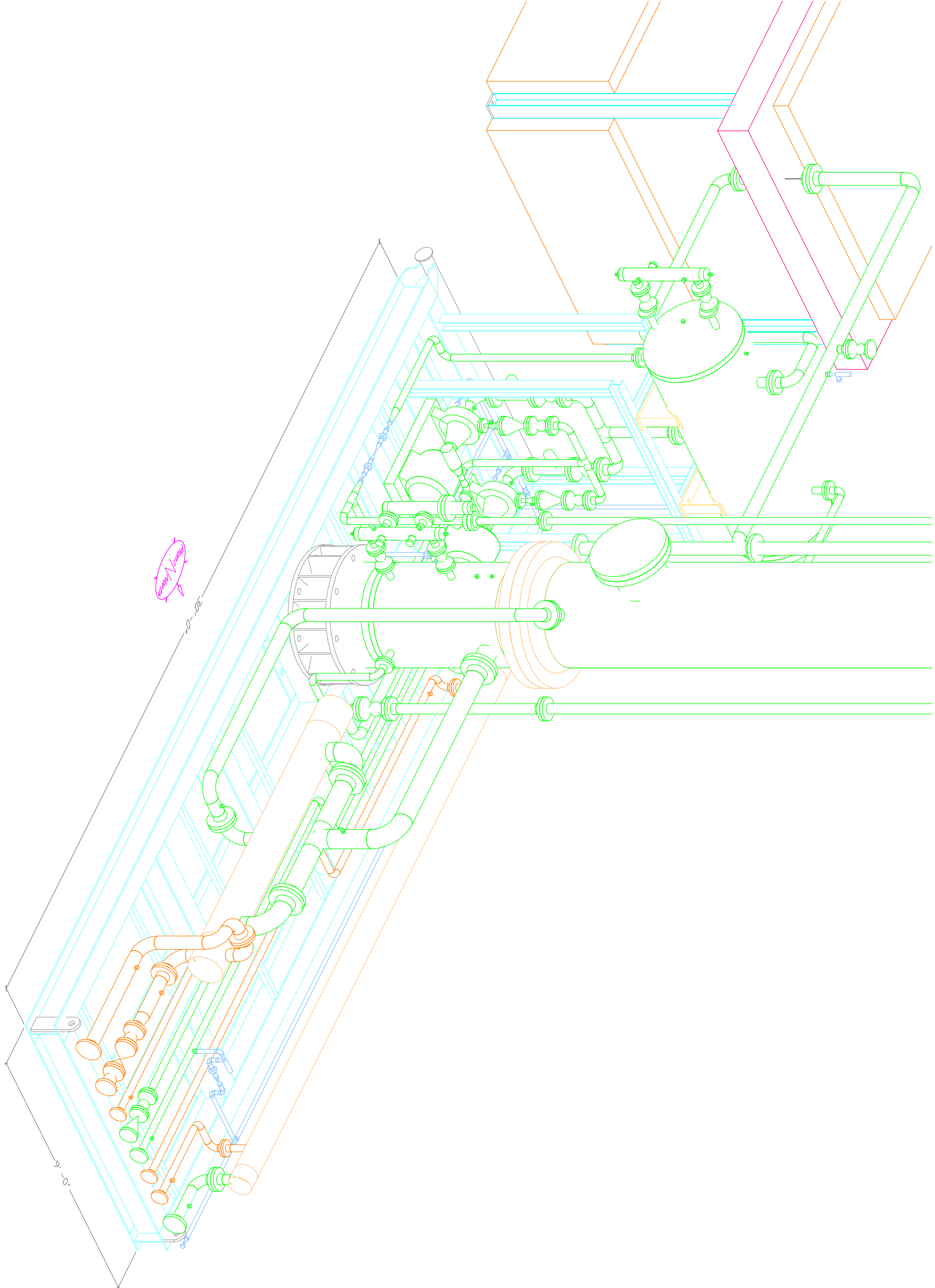


2/12/2001 08:56

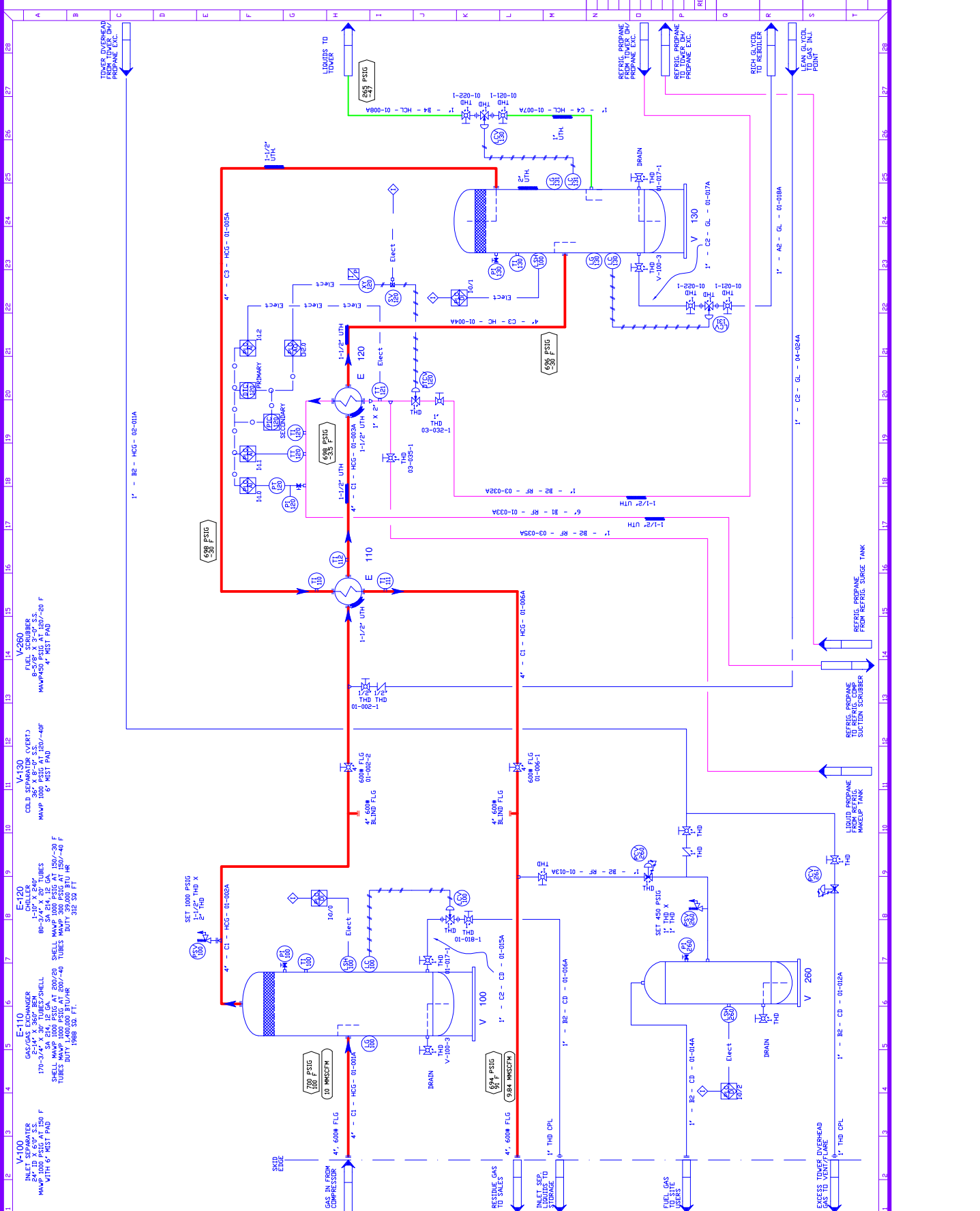
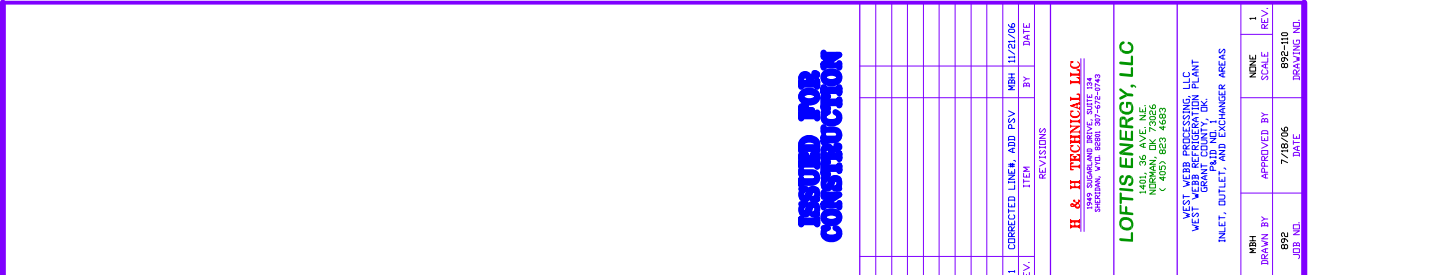


2/12/2001 08:56









REVISIONS
 REV. ITEM BY DATE
 1 CORRECTED LINE, ADD PSV MBH 11/21/06

H & H TECHNICAL LLC
 1401.36 AVE. N.E.
 GRANT COUNTY, OR
 (503) 825 4885

LOFTIS ENERGY, LLC
 1401.36 AVE. N.E.
 GRANT COUNTY, OR
 (503) 825 4885

INLET, OUTLET, AND EXCHANGER AREAS
 MBH DRAWN BY 7/18/06 892-10
 JEB NOL DATE SCALE REV.
 1

ISSUED FOR CONSTRUCTION













2/10/2001 15:03



12 4:13 PM



15

12 4:12 PM